



TSE 7510
Digital Advanced
Handheld Oscilloscope

TSE 7510 Digital Advanced Handheld Oscilloscope

DESCRIPTION

The Handheld Oscilloscope includes a multifunctional measurement system with oscilloscope and millimeter facilities. Furthermore, it has a built-in paperless writer. The rechargeable NiMH-battery packs guarantee a usage of 4 hours (AC-independent) work and are able to be recharged within 4 hours. With its several automatic power saving possibilities, the Scope Meter can last all day.

USAGE

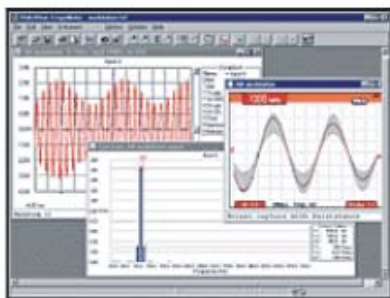
The Scope Meter is an important tool to handle all the different basic measurements for

- TC (Telecommunication networks)
- DC (Data communication networks)
- ACS (Access control systems)
- FDS (Fire detection systems)
- IDS (Intrusion detection systems)
- EIB (European installation bus)
- BBTv (Broadband television)



FEATURES

- Dual input, available with 60, 100 or 200 MHz bandwidth
- Up to 2.5 GS/s real-time sampling per input
- mAs current-over-time measurement
- Connect-and-View™ automatic triggering, a full range of manual trigger modes plus external triggering
- 30,500 points per input record length using Scope Record™ mode
- Automatic capture and replay of 100 screens
- 24 automatic waveform measurements
- Cursor, zoom and real-time clock
- Four hour rechargeable NiMH battery pack
- 1,000V CAT II and 600V CAT III safety certified
- Up to 1,000V independently floating isolated inputs
- Includes a 5,000 count true-rms multi meter and a Trend Plot™ paperless recorder

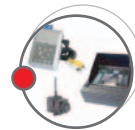


The software helps you get more out of your scope meter by

- Documenting: transfer screens, waveforms and measurement data from the scope meter to your PC for printing, or to import data to other programs.
- Archiving: Store and retrieve waveforms with text annotations and create your own library for easy reference and comparison
- Analysis: gather valuable measurement data and enable cursor measurements to reveal relationships and conditions.

TECHNICAL DATA

Bandwidth	Fluke 199C, 199B: 200 MHz
Max. real time sample rate	2.5 GS/s
Display	144 mm Full Color LCD
Digital Persistence	Yes, Gives analog oscilloscope like waveform decay (user selectable)
FFT Analysis	Frequency spectrum analysis using mathematical function Fast Fourier Transform (FFT)
Envelope mode	Yes
Waveform Compare	Visual Reference and Automatic Pass / Fail™ testing
Max. record length in Scope mode:	3000 points per input channel
in Scope Record mode:	27,000 points per input or more (5 ms/div to 2 min/div.)
Number of inputs	2 plus external / DMM input, all isolated from each other and from ground
Number of digitizers	2
Independently floating isolated inputs	Up to 1000 V between inputs, references and ground
Glitch capture	Up to 3 ns using Pulse Width triggering; 50 ns peak detect at 5 ms/div. to 1 min/div.
Time base range in Scope mode	5 ns/div to 2 min/div
Trigger types	Connect-and-View®, Free Run, Single Shot, Edge, Delay, Video Frame, Video line, Selectable pulse width and External
Advanced Trigger Types	N-Cycle Trigger. Delay Trigger by N events Dual Slope Trigger. Trigger on both rising and falling edges of waveform
Scope Measurements	7 cursors measurements, 30 automatic measurements
Cursor-limited Automatic Measurements	Vrms or Wavg automatic measurement within cursor defined time limits
Scope-Record Trigger modes	Start on Trigger, Stop on Trigger
Capture last 100 screens	Automatic, with Replay capability
Dual input Trend Plot	Yes, with Cursors and Zoom
Memory for screens and set-ups	10 screens with set-up 5 more memories are made available upon registration of the Scope Meter
Memory for recordings	Two, each can store 100 scope screens, a Scope Record or a Trend Plot
True RMS multi meter	5000 counts, Volts, Amps, Ohms, Continuity, Diode, Temp
Battery (installed)	4 hr Ni-MH BP190
Line power	Adapter / battery-charger included
Size	25.6 x 16.9 x 6.4 cm (10.1 x 6.7 x 2.5 inch)
Weight	2 kg
PC and Printer interface	Using optional Optically Isolated RS232 adapter / cable



If you would like further Information about ELAMAN,
or would like to discuss a specific requirement or project, please contact us at:

Elaman GmbH
German Security Solutions
Seitzstr. 23
80538 Munich
Germany

Tel: +49-89-24 20 91 80
Fax: +49-89-24 20 91 81
info@elaman.de
www.elaman.de