



Portable Modem Intereception Munin POTS

Portable Modem Interception

The unit is a true portable modem intercept solution to be used in operations where direct access to the target lines is required.

This unit can be deployed in the field close to the target or installed on a permanent basis, for example, in a monitoring center. Due to the unique design of the physical line interface the system is completely undetectable by the target and is transparent to all parties on the line, making it ideal for all covert operations.



1. System Summary

The system is delivered as a complete turnkey solution, including all cables and accessories. It consists of a high quality and specially designed PSTN line interface and a lunchbox computer for recording and decoding. It is very easy to operate and it only needs a few hours of training to use it at its fullest potential.

The system intercepts all dialup modem traffic on a two wire analog PSTN line, and has no influence on normal voice or fax traffic on the intercepted target line.

V.90 and V.92 is supported but will be trained down to 33.600 from the interface box towards the target.

The target line is connected in sequence to the line interface box that in turn connects to the lunchbox computer; power it up and you are ready to go.

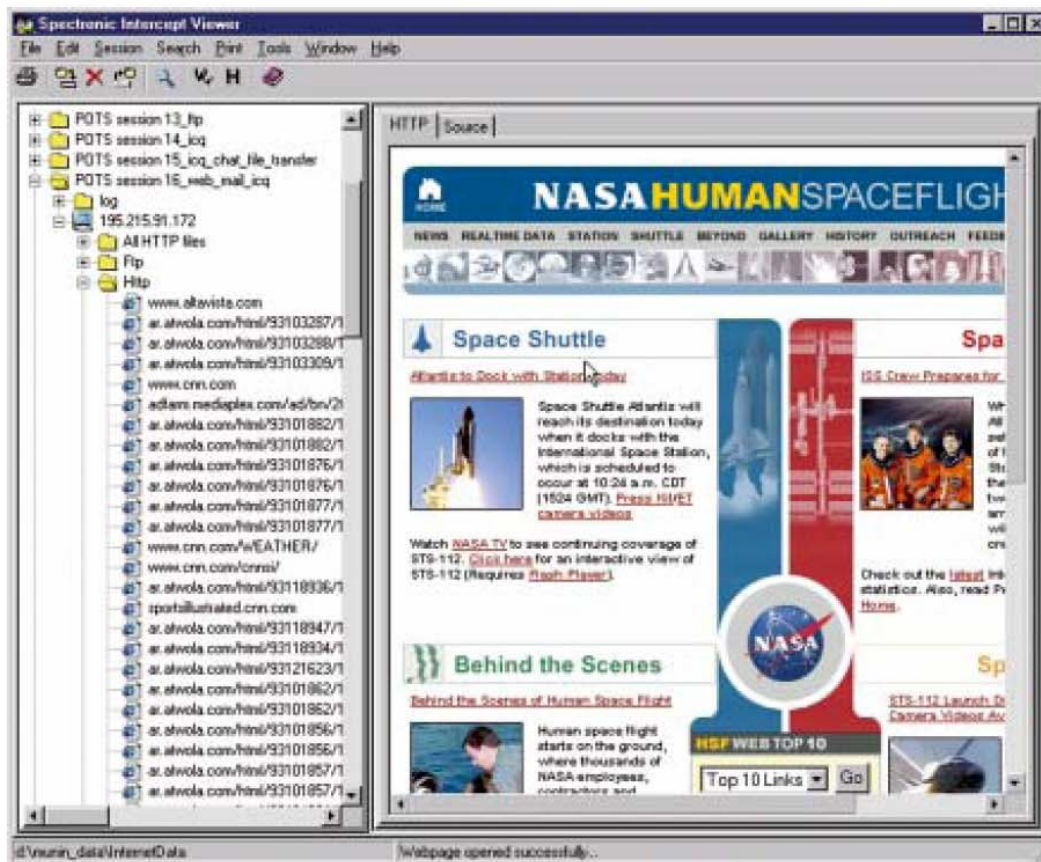
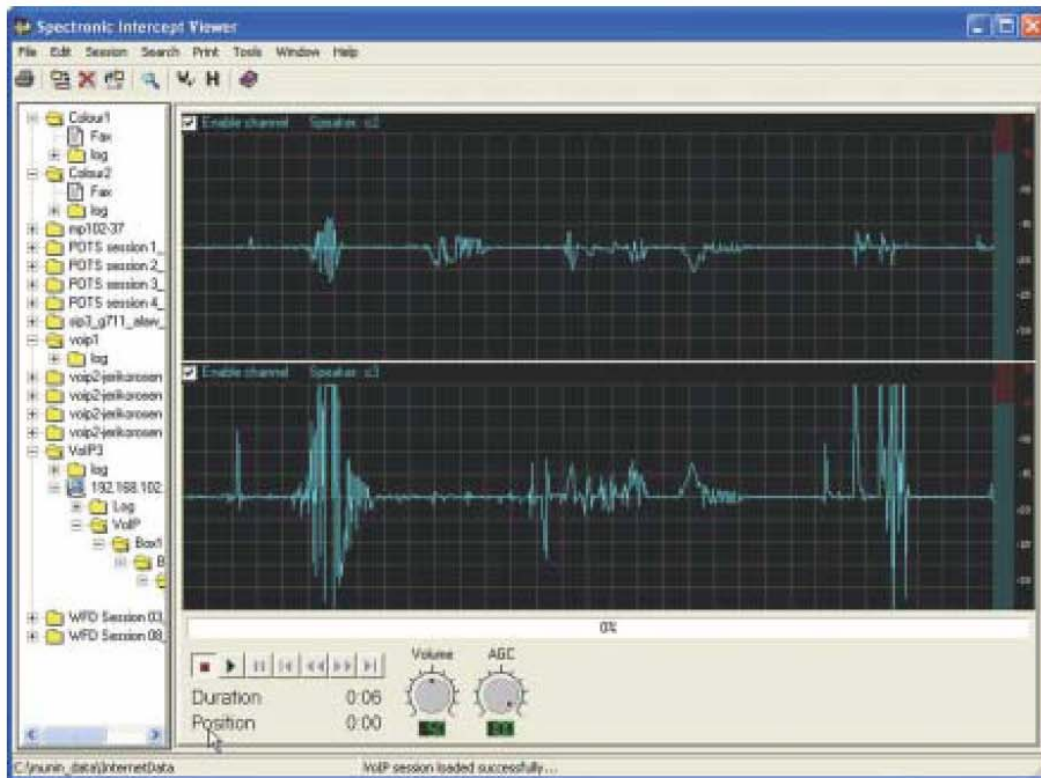
You can listen to any Voice over IP traffic. The audio player contains an automatic gain control filter to enhance the audio.

With these advanced tools you are able to follow whatever the target is doing on the internet and easily pinpoint any illegal activity.

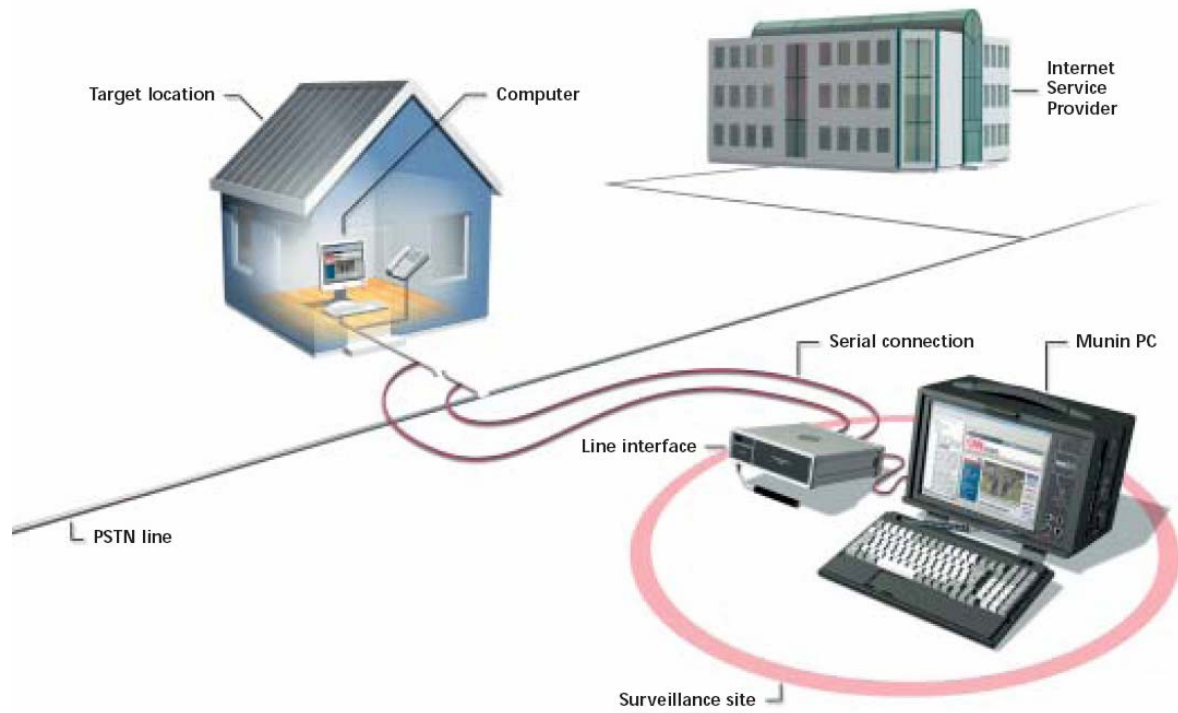
Information can be copied to the built-in CD or DVD writer for presentation in court or other purposes.

The intercepted traffic is decoded into readable information for access to a broad range of tools for dealing with the intercepted data.

- Web pages
- E-mails
- Attachments
- Chat Sessions
- Web Mail
- Voice Over IP
- File Transfers
- Messenger Services



System Overview



<p>Applications</p> <ul style="list-style-type: none"> • Field deployment and other temporary set-up scenarios • Permanent set-up in monitoring centers and offices • Operations where direct access to target lines are required • Internal investigations • Covert operations 	<p>Features</p> <ul style="list-style-type: none"> • Easy set-up • Easy to operate • Automatic modem detection • Supports V.90 and V.92 • Web page decoder and viewer • E-mail decoder and viewer • Password acquisition for non-encrypted protocols
---	--

2. Technical specifications

Internal Modems	
Protocols	V.21 Bell, V.22 Bell, V.22bis, V.23, V.32, V.32bis, V.34 (33.6 /
Internet protocols	HTTP, POP3, SMTP, IMAP, NNTP, IRC, TELNET, FTP, VoIP
PSTN Line Interface	
Connector	Modular plug (RJ11) in parallel with Banana Jack 4 mm with
Power Input	
Connector	IEC Plug, 115 / 230 V Selections
Power Supply	
AC input	250 W / 100-120 V / 50-420 Hz, 200-250 V / 50-60 Hz auto select EN60950 EMI EN55022 Class B
Dimensions	41x31x25 cm / 16.1x12.2x9.8 inches
Weight	9.75 kg / 21.5 lbs.

3. Environmental specifications

Temperature	
Operating temp.	0° C to +50° C / 32 F to 122 F
Storage temp. Range	-40° C to +70° C / -40 F to 158 F
Humidity	
Range	Max. 90%

4. Options

Hard Carrying Case

Dial-in Access

Model 4001 is also available with a stationary PC



If you would like further Information about ELAMAN,
or would like to discuss a specific requirement or project, please contact us at:

Elaman GmbH
German Security Solutions
Seitzstr. 23
80538 Munich
Germany

Tel: +49-89-24 20 91 80
Fax: +49-89-24 20 91 81
info@elaman.de
www.elaman.de