



Active Off-Air System GSM-XPZ PV

Active Off-Air System: GSM-XPZ PV

General Overview

The GSM-XPZ family of active interception solutions provide a tactical tool for law enforcement, government and military agencies.

Utilising commercial base-station technology and operating independently of the GSM network providers, the GSM-XPZ family of vehicle and portable products provide the capability to clone and simultaneously transmit multiple fake GSM networks to interact with GSM cell phones.

The GSM-WPZ PV can

- Covertly identify the unique identity (IMSI/IMEI) of target GSM cell phones
- Locate known targets using their GSM mobiles in conjunction with the direction finding equipment
- Take control of target phones for the purpose of denying GSM services
- Intercept outgoing calls and SMS made by a target
- Create a bubble or exclusion zone to deny GSM network coverage without alerting cell phones

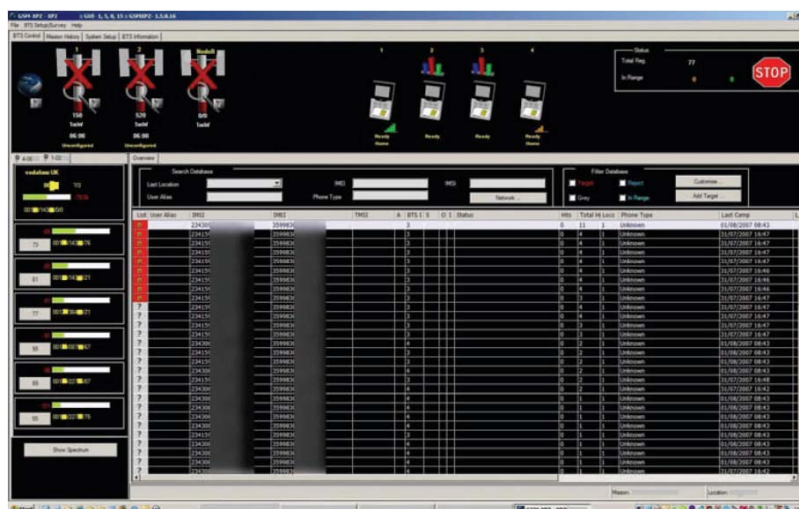


Main Features

- Rugged form factor for in-vehicle use
- Simple to use Graphical User Interface (GUI)
- Multiple BTS systems allowing up to 4 BCCH on one network or 4 BCCH on the two different networks
- Transmit output power – up to 25 Watts per Band
- Identify IMSI/IMEI to a rate of 7200 cell phones per minute
- Blind/Silent Call up to 7 target cell phones per BTS
- Simultaneous intercept of up to 4 outgoing voice calls
- Deny service by stopping specified phones rejoining a real network
- Create a bubble zone of exclusion to stop all cell phones in range accessing the real GSM network
- Private network capability to allow designated phones to communicate without using the real GSM network
- 3G/UMTS integrated add-on upgrade options

Key Specifications

<i>Channels</i>	PV: 4 Channels: 2x900+2x1800 or 2x850 + 2x1900 or 1x850 + 1x900 + 1x1800 + 1x1900
<i>Channel Range</i>	Euro: E-GSM, GSM, DCS US: 850, PCS Quad: 850, E-GSM, DCS, PCS
<i>Channel Frequency</i>	200 KHz
<i>Output Power</i>	PV: 1mW to 50W (max) per band
<i>Operating Temperature</i>	-5°C to + 45°C (23°F to 113°F)
<i>Storage Temperature</i>	-10°C to + 70°C (14°F to 158°F)
<i>Power Consumption (Max.)</i>	PV: 600W
<i>Power Supply</i>	PV: 24 Vdc
<i>Size</i>	PV: W 500mm x H 200mm x D 580mm 28kg
<i>Interface Connections</i>	Antennas: PV: Directional: 2x Low Band, 2 x High Band Omni: 2 x Combined Data/ Audio: Interface via secure Ethernet



XPZ PV GUI



If you would like further Information about ELAMAN,
or would like to discuss a specific requirement or project, please contact us at:

Elaman GmbH
German Security Solutions
Seitzstr. 23
80538 Munich
Germany

Tel: +49-89-24 20 91 80
Fax: +49-89-24 20 91 81
info@elaman.de
www.elaman.de