

FinSpy is a field-proven Remote Monitoring Solution that enables Governments to face the current challenges of **monitoring Mobile and Security-Aware Targets** that regularly **change location**, use **encrypted and anonymous communication** channels and **reside in foreign countries**.

Traditional Lawful Interception solutions face new **challenges** that can only be solved using active systems like FinSpy:

- Data not transmitted over any network
- Encrypted Communications
- Targets in foreign countries

FinSpy has been **proven successful** in operations around the world **for many years**, and valuable intelligence has been gathered about Target Individuals and Organizations.

When FinSpy is installed on a computer system it can be **remotely controlled and accessed** as soon as it is connected to the internet/network, **no matter where in the world** the Target System is based.

Feature Overview

Target Computer – Example Features:

- Bypassing of 40 regularly tested Antivirus Systems
- **Covert Communication** with Headquarters
- Full **Skype Monitoring** (Calls, Chats, File Transfers, Video, Contact List)
- Recording of **common communication** like Email, Chats and Voice-over-IP
- **Live Surveillance** through Webcam and Microphone
- **Country Tracing** of Target
- **Silent extracting of Files** from Hard-Disk
- **Process-based Key-logger** for faster analysis
- **Live Remote Forensics** on Target System
- **Advanced Filters** to record only important information
- Supports most common Operating Systems (**Windows, Mac OSX** and **Linux**)

QUICK INFORMATION

Usage:	· Strategic Operations · Tactical Operations
Capabilities:	· Remote Computer Monitoring · Monitoring of Encrypted Communications
Content:	· Hardware/Software

Usage Example 1: Intelligence Agency

FinSpy was installed on several computer systems inside **Internet Cafes in critical areas** in order to monitor them for suspicious activity, especially **Skype communication** to foreign individuals. Using the Webcam, pictures of the Targets were taken while they were using the system.

Usage Example 2: Organized Crime

FinSpy was **covertly deployed on the Target Systems** of several members of an Organized Crime Group. Using the **country tracing and remote microphone** access, essential information could be gathered from **every meeting that was held** by this group.

Headquarters – Example Features:

- Evidence Protection (Valid Evidence according to **European Standards**)
- **User-Management** according to Security Clearances
- Security Data Encryption and Communication using **RSA 2048 and AES 256**
- Hidden from Public through **Anonymizing Proxies**
- Can be **fully integrated** with Law Enforcement Monitoring Functionality (LEMF)

For a full feature list please refer to the Product Specifications.



Product Components



FinSpy Master and Proxy

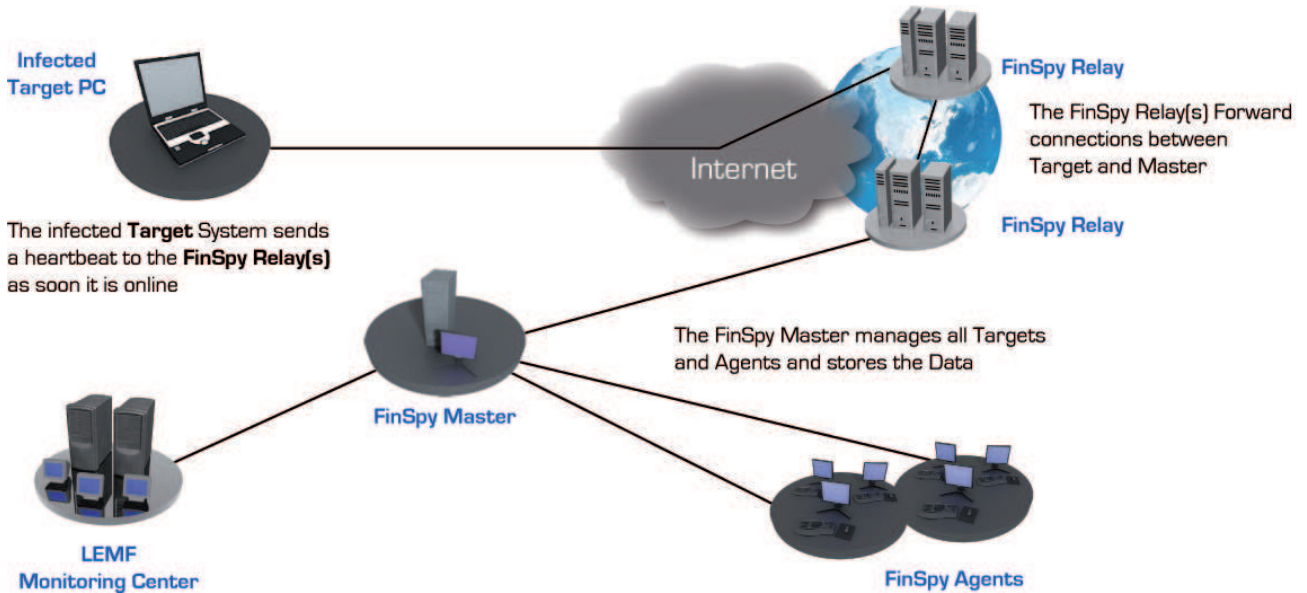
- Full Control of Target Systems
- Evidence Protection for Data and Activity Logs
- Secure Storage
- Security-Clearance based User- and Target Management



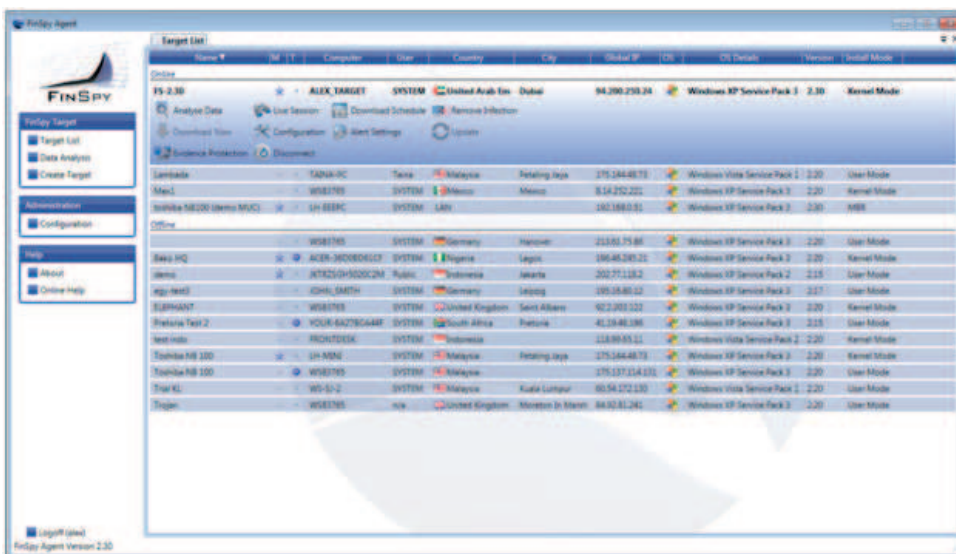
FinSpy Agent

- Graphical User Interface for Live Sessions, Configuration and Data Analysis of Targets

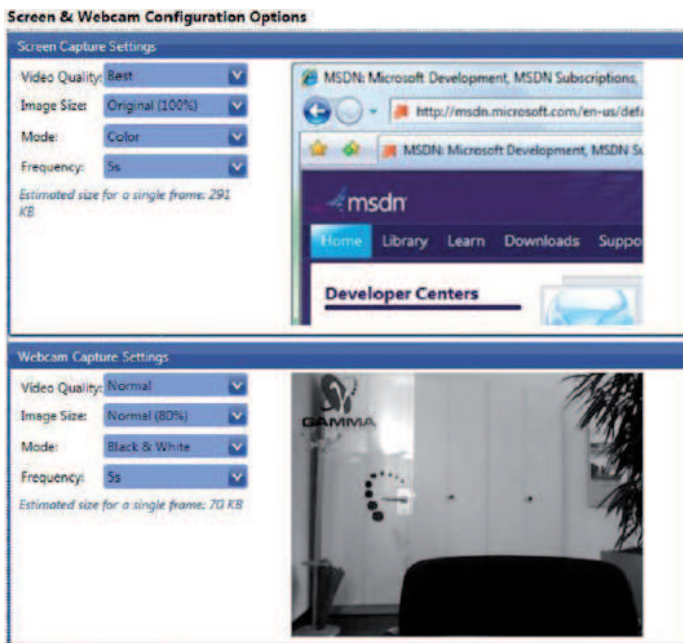
Access Target Computer Systems around the World



Easy to Use User Interface



Live and Offline Target Configuration



Full Intelligence on Target System



1. Multiple Data Views
2. Structured Data Analysis
3. Importance Levels for all recorded Files

FINSKY LICENSES

Outline

The FinSpy solution contains 3 types of product licenses:

A. Update License

The Update License controls whether **FinSpy** is able to retrieve new updates from the Gamma Update server. It is combined with the **FinFisher™ After Sales Support** module. After expiry, the **FinSpy** system will still be **fully functional** but no longer able to retrieve the newest versions and bug-fixes from the FinSpy Update server.

B. Agent License

The Agent License controls how many **FinSpy Agents** can login to the **FinSpy Master** in parallel.

Example:

- **5 Agent Licenses** are purchased.
- **FinSpy Agent** licenses can be installed on an unlimited number of systems, however
- Only 5 **FinSpy Agent** systems can login to the **FinSpy Master** and work with the **data at the same time**

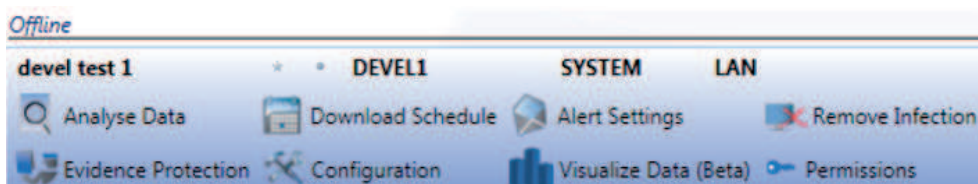
C. Target License

The Target License controls how many **FinSpy Targets** can be **active** in parallel.

Active refers to **activated FinSpy Target** installations no matter whether the Target System is online or offline.

When **FinSpy Target** is deployed on a Target System and no Target Licenses are available, the **FinSpy Target** gets temporary deactivated and no recording and live access will be possible. As soon as a new License is available (e.g. by upgrading the existing License or de-infecting one of the active **FinSpy Targets**), the Target will be assigned the free license and it will be activated and begin recording and providing live access.

Screenshot active Target with License



Screenshot inactive Target without License

