

# ActivIdentity™ AAA Server

**ActivIdentity AAA Server delivers a scalable strong authentication solution based on LDAP to secure WLAN, remote access, web access, and e-business applications across enterprise infrastructure.**

## Highlights

### Secure Dial-up

Supports any third party dialer and is integrated with Microsoft® Dialer.

### Secure VPN

Supports all market leading VPN vendors and seamlessly integrates with Check Point™.

### Secure Web Access

Provides strong one-time password authentication for any website running on IIS or Sun ONE web servers, as well as Microsoft Outlook® Web Access.

### Secure Wireless LAN

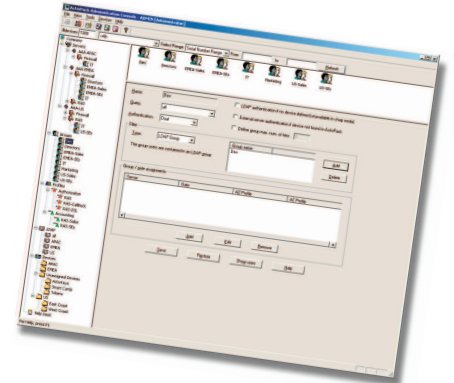
Integrates 802.1x authentication which meets Wireless Protected Access (WPA) standards and supports Microsoft® and Cisco® clients.

### Secure Terminal Services

Secure login to Citrix® MetaFrame® Presentation Server - Web Interface.

## Enterprise AAA Server with Integrated WLAN Security

ActivIdentity AAA Server is a strong scalable RADIUS and TACACS+ compliant server. Offering full Authentication, Authorization, and Accounting services, ActivIdentity AAA Server enables enterprises to secure and manage WLAN and remote network access with two-factor authentication. It is the only one-time password authentication server on the market that has native WLAN security and fully integrates with your existing corporate directory.



## Key Advantages

### > Compelling ROI:

- Provides a lower total cost of ownership than the competition—even if existing two-factor remote access technology is in place.
- LDAP-centric integration eliminates dual administration.

### > Smooth Bridge and Migration:

- Supports all current and future authentication needs.
- Allows enterprises to deploy a mixed environment of static passwords, tokens, soft tokens, USB keys, and smart cards to allow migration from a single function token solution to a multi-application smart card-based environment.

### > Ease-of-Use:

- Brings the ATM experience to network computing, simplifying the user experience with the universally accepted PIN entry method.
- PIN entry allows access to multiple authentication credentials on a single smart card device.

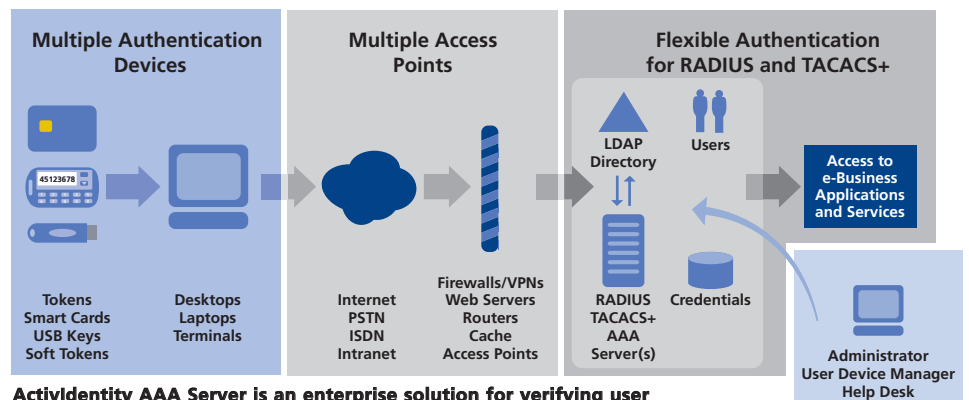
### > Enhanced Security:

- Integrated WLAN security Wireless Protected Access (WPA) 802.1x authentication.
- Allows local initialization of tokens and smart cards, ensuring that keys are securely deployed.
- When deploying smart card devices, all private keys are generated and stored on the smart card providing secure storage and protection from unauthorized users.

### > Easy Implementation and Administration:

- Supports LDAP directories and SQL compatible databases, therefore requiring no proprietary database—enabling centralized administration with distributed authentication.
- Designed for easy installation and deployment.

## ActivIdentity AAA Server Architecture for Remote Access



**ActivIdentity AAA Server is an enterprise solution for verifying user authentication requests and instantly enforcing security policies across distributed sites worldwide.**

# Actividentity AAA Server

## Specifications

### Actividentity AAA Server Components

- > Administration Console
- > Authentication Server (RADIUS, TACACS+, IEEE 802.1x)
- > Optional Components
  - Web help desk & self service portal
  - Web access agent (IIS & Sun One)
  - Citrix Presentation Server - Web Interface
  - Realm Proxy
- > Interfaces and APIs
  - Help desk and self service interface web API (SOAP/HTTPs)
  - Remote Authentication API (ANSI C)

### Administration Services

- > Administrator
  - Manage authentication server parameters and access gates
  - Define authorization, authentication and accounting profiles
  - Define authorization profiles based on conditional statement
- > Audit Manager
  - Consolidate, view, and delete auditing logs
- > Device Manager
  - Create, delete, and initialize devices
  - Assignment of devices
- > Help Desk
  - Lock, unlock, and resynchronize personal devices
  - Activate, deactivate emergency access
- > Self Service Portal
  - Unlock and resynchronize
  - Report lost, stolen devices

### Security Services

- > EAP-TLS, PEAP-GTC, PEAP-MSCHAPv2
- > Authenticate users from routers, firewalls, APs, VPNs, or Web servers
- > Encryption of:
  - Administration database
  - Remote administration sessions
  - Device to server authentications
  - Authentication server exports
  - User PIN, credentials, and keys
- > Import/export secret key management

### Authentication Options

- > One-Time Password, Static Password, LDAP Password, X509 Certificate, Short Message Service (SMS)

- > Hardware tokens
  - Actividentity Token
  - Actividentity Keychain Token
  - Actividentity Mini™ Token
  - Actividentity Token XL
- > Soft Token for PC, JavaPhone™, Palm® and PocketPC
- > USB Key Java 64k
- > 32k, 64k Java Card™

### Compliance to Industry Standards

- > Data Encryption Standard: 3DES
- > Challenge/Response: ANSI X9.9
- > Key Management: ANSI X9.17
- > Radius RFC 2865, 2866 and 2869
- > RADIUS support for EAP: RFC 3579, 3748
- > EAP-TLS RFC 2716

### Compatibility

- > Any RADIUS and TACACS+ server or client (Firewalls, VPNs, Routers, 802.1x compliant Access Points)
- > Check Point FireWall-1®
- > Check Point VPN-1 SecuRemote™
- > Cisco Systems Secure PIX® Firewall
- > Cisco Systems Secure VPN
- > Cisco® 802.1x clients
- > Citrix MetaFrame Presentation Server Web Interface
- > Funk Odyssey 802.1x client
- > Juniper Firewall and VPN
- > Microsoft 802.1x clients
- > Microsoft IIS web server
- > Microsoft RAS client
- > Microsoft Outlook Web Access - Forms-Based
- > Nortel Networks™ Contivity
- > Novell Modular Authentication Service (NMAS)
- > Microsoft SQL Server, Microsoft Desktop Engine, Oracle® databases
- > SunOne Web server
- > Directory Services: Critical Path Directory Server, IBM® Tivoli® Directory Server, Microsoft Active Directory, Novell® eDirectory™, Sun Java™ System Directory Server
- > Leading reporting tools

### System Requirements Administration Console

- > Intel® Pentium® III 650MHz
- > 128 MB
- > 100 MB hard disk
- > Windows 2000(SP4), Windows XP Pro (SP1) or Windows Server 2003 SP1
- > ODBC compatible database

### Authentication Server

- > Windows
  - Intel Pentium III 650 MHz
  - 128 MB RAM, 4 GB hard disk
  - Windows 2000(SP4) or Windows 2003
  - ODBC compatible database

### Web Help Desk & Self Service Portal

- > Internet Explorer 5.5 SP2 or later

### Web Access Agents

- > Sun ONE Web Server 6.0, iPlanet Web Server 6.0
- > Microsoft IIS 5.0, 6.0/Windows 2000/2003
- > Internet Explorer 5.5 SP2 or later

### Related Documents

- > ActivClient™ Data Sheet
- > Actividentity Tokens Data Sheet
- > Actividentity USB Key Data Sheet
- > Actividentity CMS Data Sheet

### www.actividentity.com

#### Actividentity Americas

Tel: +1 (510) 574.0100  
 Fax: +1 (510) 574.0101  
 info@actividentity.com

Actividentity U.S. Federal

Tel: +1 (571) 522.1000  
 Fax: +1 (703) 988.9636  
 info@actividentity.com

#### Actividentity Europe

Tel: +33 (0) 1.42.04.84.00  
 Fax: +33 (0) 1.42.04.84.84  
 info@actividentity.com

#### Actividentity Asia Pacific

Tel: +61 (0) 2.6208.4888  
 Fax: +61 (0) 2.6281.7460  
 info@actividentity.com



AVVID  
Partner