

REVISION DATE:  
8/8/2014 TINA  
ALLISON

BLDG. LEGEND:

BALLROOM HALLS A-E  
FLOOR PLAN GENERAL NOTES

40' CEILING HEIGHT  
ALL DRAPE LINES ARE SUBJECT  
TO CHANGE PER ON-SIGHT  
FIRE MARSHAL APPROVAL.

ACCESS DEFINITIONS

TOTAL ACCESS:  
ENTIRE DOOR MUST BE COMPLETELY  
CLEAR TO NEAREST AISLE IN A  
DIRECT LINE AND COMPLETELY  
VISIBLE AT ALL TIMES

FLOOR PORTS LEGEND

- MECHANICAL FLOOR PORTS
- WATER/DRAIN/AIR
- ELECTRICAL FLOOR PORTS
- 60AMP/208V
- 15AMP/120, 30AMP/208V
- COMM - LV

GENERAL LEGEND

- FHEC - FIRE HOSE & EXTINGUISHER CABINET (MUST REMAIN CLEAR)
- FHC - FIRE HOSE CABINET (MUST REMAIN CLEAR)
- FX - FIRE EXTINGUISHER (MUST REMAIN CLEAR)
- E - ELECTRICAL OUTLET
- E2 - ELECTRICAL OUTLET 30A/120-208V
- LV - INTERNET CONNECTION
- LV - PHONE SERVICE
- MIC - MICROPHONE
- ⊕ - COLUMN
- ⊖ - FIRE STROBE (8' FROM FLOOR)
- 📷 - SECURITY CAMERA (10' FROM FLOOR)
- ⚡ - AUTOMATIC EXTERNAL DEFIBRILLATOR
- 🚪 - FIRE EXIT SIGNS (10' FROM FLOOR)
- 🎨 - BUILDING ART DISPLAYS

- WOMEN'S RESTROOM
- MENS RESTROOM
- PASSENGER ELEVATOR
- FREIGHT ELEVATOR
- RAMP
- REGISTRATION
- STAIRS
- ESCALATOR
- CONCESSION/RESTAURANT
- PHONE
- PARKING
- INFORMATION

LINETYPE LEGEND

- ROLL-UP DOORS
- AIRWALLS
- LOW CEILINGS
- KEEP CLEAR
- OPEN ABOVE

SCALE



COMMUNICATIONS & IT

PERSONAL EQUIPMENT & UNIFORMS PAVILION

GEMMA CERNETIC  
PRINT DATE:  
8/8/2014

NOT TO SCALE

DISCLAIMER

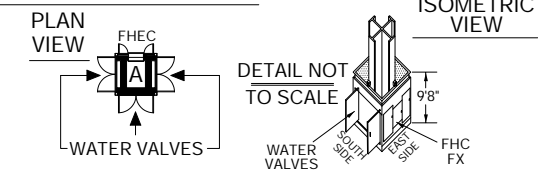
EVERY EFFORT HAS BEEN MADE TO ENSURE THE ACCURACY OF ALL INFORMATION CONTAINED ON THIS FLOORPLAN. HOWEVER NO WARRANTIES, EITHER EXPRESSED OR IMPLIED ARE MADE WITH RESPECT TO THIS FLOORPLAN. IF THE LOCATION OF BUILDING COLUMNS, UTILITIES OR OTHER ARCHITECTURAL COMPONENTS OF THE FACILITY IS A CONSIDERATION IN THE CONSTRUCTION OR USAGE OF AN EXHIBIT, IT IS THE SOLE RESPONSIBILITY OF THE EXHIBITOR TO PHYSICALLY INSPECT THE FACILITY TO VERIFY ALL DIMENSIONS AND LOCATIONS.  
© COPYRIGHT 2007, FREEMAN CO.  
ALL RIGHTS RESERVED.

COLOR KEY

- COLUMNS NOTED IN RED
- IACP SHOW MGMT-PURPLE BOOTHS
- FREIGHT FREE NO CROSS AISLES
- LIGHT PINK SHADED AREAS ARE DESIGNATED INLINES

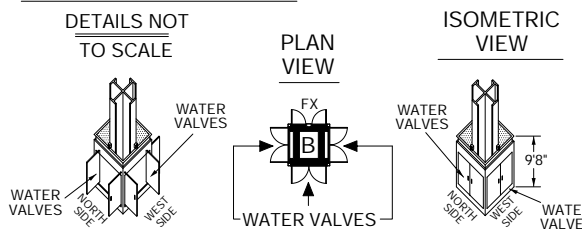
LOW 20' CEILING/HANGING IS LIMITED

COLUMN TYPE A



COLUMN W/ FIRE HOSE (FHC) & FIRE EXTINGUISHER (FX) CABINET  
ALL DOORS OPEN 42"  
EAST SIDE - FHC (TOTAL ACCESS)  
NORTH, SOUTH & WEST SIDES - WATER VALVES (LIMITED ACCESS)  
FIRE STROBE SITS ON TOP OF EACH SIDE OF COLUMN BASE (9'8" HIGH FROM THE FLOOR)

COLUMN TYPE B



COLUMN W/O FIRE EXTINGUISHER CABINET (F)  
ALL DOORS OPEN 42"  
EAST SIDE - (LIMITED ACCESS)  
NORTH, SOUTH & WEST SIDES - WATER VALVES (LIMITED ACCESS)  
FIRE STROBE SITS ON TOP OF EACH SIDE OF COLUMN BASE (9'8" HIGH FROM THE FLOOR)

IACP

OCTOBER 24-27, 2015

McCORMICK PLACE WEST, EXHIBIT HALL F

Chicago



FILE PATH: C:\Floor Plans\2015\IACP15 WEST LEV. 3 McCORMICK PLACE WEST EXHIBIT HALL F