



GAMMAGROUP

THE END-USER'S VISION IS OUR MISSION

**GAMMA
NEWSLETTERS 2011-2012**





Dear Customers,

Our 2011-12 newsletter shows a range of selected equipment from Gamma Group's capabilities in the field of Tactical & Strategic Surveillance & Monitoring Systems, which can operate independently or within a system design. The equipment can be tested and demonstrated upon request. We look forward to hearing from you.

INDEX

COMPANY PROFILE	2
EXHIBITIONS OVERVIEW 2011/2012	3
IT INTRUSION SEMINARS	4
FINFISHER IT INTRUSION (GAMMA INTERNATIONAL UK LIMITED)	5
COMMUNICATIONS MONITORING SOLUTIONS (GAMMA GROUP INTERNATIONAL)	8
TECHNICAL SURVEILLANCE SYSTEMS - VANS/CARS (GAMMATSE LIMITED)	25
TECHNICAL SURVEILLANCE EQUIPMENT (GAMMATSE LIMITED)	30
TECHNICAL SURVEILLANCE COUNTER MEASURES (GAMMATSE LIMITED)	45
VIP SECURITY PRODUCTS (G2 SYSTEMS LIMITED)	49
INTELLIGENCE GATHERING & TECHNICAL TRAINING SERVICES (G2 SYSTEMS LIMITED)	54
INTELL VIDEO/AUDIO CONCEALMENT COURSES (G2 SYSTEMS LIMITED)	56



GAMMA GROUP

Gamma Group is an international manufacturer of surveillance systems based in Germany and the United Kingdom, providing advanced technical surveillance, monitoring solutions and advanced government training as well as international consultancy to National and State Intelligence Departments and Law Enforcement Agencies. Since it was founded in 1990, the group has expanded and now has four separate companies under its wing: GammaTSE, Gamma International GmbH, G2 Systems and Gamma International UK. In 2011, Gamma UK moved to a larger facility at Fellows House, and opened an Asia office in Kuala Lumpur headed by Edgar Bucheli.



GROUP ALLIANCE

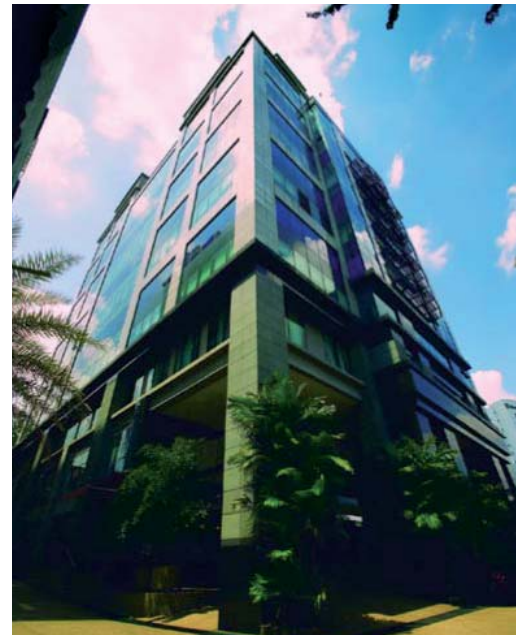
The Group alliance of companies consists of:
GammaTSE
Gamma International UK
Gamma International GmbH
G2 Systems
Elaman GmbH
CBRNTeam Limited
TS Comms
Elaman SA

GAMMA OFFICES EXPANSION

Andover, United Kingdom



Kuala Lumpur, Malaysia



GAMMA GROUP

Tel. +44 1264 332 411
Fax. +44 1264 332 422
info@gammagroup.com
www.gammagroup.com

SALES CONTACT

Brydon Nelson
Tel. +44 7818 446 302
bn@gamma2systems.com

Stephan Oelkers
Tel. +49 172 8425162
so@gammagroup.com

Edgar Bucheli
Tel. +60 123 839897
eb@gammagroup.com

Johnny Debs
Tel. +44 7990 572 299
jdebs@gammagroup.com

Derek Myers
Tel. +44 1264 332 411
dm@gammatse.com

Carlos Gandini
Tel. +49 172 8619001
cg@gammagroup.com



EXHIBITIONS OVERVIEW 2011 - 2012

TRAINING FACILITIES – UK & GERMANY & MALAYSIA



EXHIBITIONS OVERVIEW

Dates	News & Events	
18 - 21 Oct. 2011	<i>Milipol Paris</i> Paris, France	
31 - 3 Oct.-Nov. 2011	<i>ICPO</i> Hanoi, Vietnam	
06 - 08 Dec. 2011	<i>ISS World Asia Pacific</i> Kuala Lumpur, Malaysia	
13 - 15 Feb. 2012	<i>ISS World MEA</i> UAE, Dubai	
On Demand	<i>IT Intrusion Seminars</i>	



FINFISHER IT INTRUSION SEMINARS

It is with pleasure that we offer our services in providing your esteemed department with a 2-day IT intrusion seminar. The idea behind the seminar is to introduce the latest techniques in IT intrusion which will be presented by our IT experts.

The 2-day seminar will cover all the theory and also include live practical demonstrations as well as discussions on building your own IT intrusion team. On the 2nd day we will also do a full demonstration of the FinFisher Intrusion and Hacking Portfolio as well as review all the training courses our company can provide.

We attach the following documentation:

- Seminar Invitation
- Seminar Agenda

If this seminar is of interest to you, we would like to agree on the following points:

- Location of the seminar
- Date of the seminar
- Number of personnel attending from your side
- Any required security clearance for our personnel

It would be a pleasure to speak with you any time at your convenience to discuss any issue regarding this seminar and provide more information.

DAY 1

- What is IT Intrusion?
- Recent Cases (Attacks on Networks, Cybercrime and more)
- Common Techniques (Samples on Intrusion to Infrastructures and Systems)
- Intrusion Techniques

DAY 2

- Common Techniques continued
- Government IT Intrusion Solutions
- Real life Intrusion Operations
- FinFisher Portfolio



FINFISHER - THE ULTIMATE INTRUSION PORTFOLIO

FinFisher is the cutting edge offensive IT Intrusion Portfolio on the market today. With this portfolio, Gamma provides complementary solutions, products and advanced training capabilities to Government end-users who are seeking world class offensive techniques for information gathering from suspects and targets.

FinFisher combines specialized areas into one comprehensive IT Intrusion Portfolio. This provides the Law Enforcement and Intelligence Communities with access to an all-encompassing range of intrusion capabilities, which can be used effectively from starting up a new Intrusion Department to providing world-class solutions and training to enhance existing resources.

The FinFisher Portfolio is based on the following products:

FinFisher Tactical IT Intrusion portfolio

- FinUSB Suite: Covertly extracts data from a computer system
- FinFireWire: Unlocks a running computer system for instant access
- FinIntrusion Kit: Professional tactical IT Intrusion Kit

FinFisher Remote Monitoring & Infection Solution

- FinSpy: Remote monitoring solution for computer systems and mobile phones
- FinFly USB: Infection USB device for physical access
- FinFly LAN: Tactical infection proxy for local area networks
- FinFly ISP: Strategic infection proxy for ISP networks
- FinFly Web: Infection website generation for remote use

IT Intrusion Training Program

- FinTraining: Training Program for IT Intrusion and CyberWar Teams

PRODUCTS PORTFOLIO

FININTRUSION KIT

FinIntrusion Kit was designed and developed by world-class IT Intrusion specialists that have over 10 years of experience from working in several Tiger Teams (Red Teams) in the private and government sector assessing the security of different networks and organizations. The FinIntrusion Kit is the result of creating an up-to-date and covert operational kit that can be used for most common IT Intrusion Operations in defensive and offensive areas. Current customers include Military CyberWar Departments, Intelligence Agencies, Police Intelligence and other Law Enforcement Agencies.

FINUSB SUITE

The FinUSB Suite is a flexible product that enables Law Enforcement and Intelligence Agencies to quickly and securely extract forensic information from computer systems without the requirement of IT-trained Agents. It has been used successfully in operations around the world where valuable intelligence has been found about Targets in covert and overt operations.

FINFIREWIRE

FinFireWire is a tactical kit that enables the operator to quickly and covertly bypass the password-protected Login-Screen or Screensaver and access the Target System without leaving a trace or harming essential forensic evidence.

FINSPY

FinSpy is a field-proven Remote Monitoring Solution that enables Governments to face the current challenges of monitoring Mobile and Security-Aware Targets that regularly change location, use encrypted and anonymous communication channels and reside in foreign countries. When FinSpy is installed on a computer system or mobile phone it can be remotely controlled and accessed as soon as it is connected to the internet/network, no matter where in the world the Target System is based.



FINFLY

FinFly is a set of products that is used for easy local network and remote infection of target systems. Its main features include on-the-fly infection of executable and screensaver downloads, triggering software updates for well-known software and infection through visited websites. After infection, the target system is fully accessible to Law Enforcement and Intelligence Agencies.

FinFly USB

The FinFly USB provides an easy-to-use and reliable way of installing Remote Monitoring Solutions on computer systems when physical access is possible

FinFly LAN

FinFly LAN was developed to covertly deploy the Remote Monitoring Solution on target systems in Local Area Networks (Wired and Wireless/802.11). It is able to infect Files that are downloaded by the Target on-the-fly, or infect the Target by sending fake Software Updates for popular Software.

FinFly Web

FinFly Web is designed to help Law Enforcement and Intelligence Agencies to covertly install FinSpy on Target Systems through Websites which install the software by using the Webbrowser module functionalities.

The product can generate a wide-range of attack codes that can be implemented into any given Website and which will infect the Target System when the website is visited.

FinFly ISP

In order to achieve greater performance and enhanced reliability, the FinFly ISP product has been completely redesigned and developed from scratch, which resulted in major changes:

- The software has been rewritten from scratch and offers a more intuitive Interface and more flexibility
- The existing hardware has been replaced by high performance servers with programmable network cards

NEW TRAINING COURSES

As part of our FinFisher Training Program, we have created a set of new cutting-edge IT Intrusion courses to cover more topics requested by our students over the past few months.

PRACTICAL SOFTWARE EXPLOITATION

Outline: This course offers practical training on using exploits for IT Intrusion purposes, e.g. using the latest Adobe Acrobat exploits to hide FinSpy inside PDF files, as well as using software vulnerabilities to break into secure computer networks, and more.

Duration: 5 days (Basic) or 10 days (Full)

Pre-Requirements:

- Basic Software Development Knowledge
- Basic Windows/Linux Knowledge
- Basic IT Intrusion Knowledge

PRACTICAL WEB APPLICATION EXPLOITATION

Outline: This course focuses on Web Application Security and shows many different ways on how to analyze them for security issues and also to use them to get remote access to web-servers.

Duration: 5 days (Basic) or 10 days (Full)

Pre-Requirements:

- Basic Web Application Knowledge

PRACTICAL PENETRATION TESTING

Outline: This course covers a wide-range of penetration testing examples, which are conducted through several practical examples.

Duration: 5 days (Basic) or 10 days (Full)

Pre-Requirements:

- Basic IT Intrusion Course



FINSPY MOBILE

FinSpy Mobile is an advanced Intrusion system which once implemented into a Target Phone guarantees full access to the communication and built-in features.

Key Features:

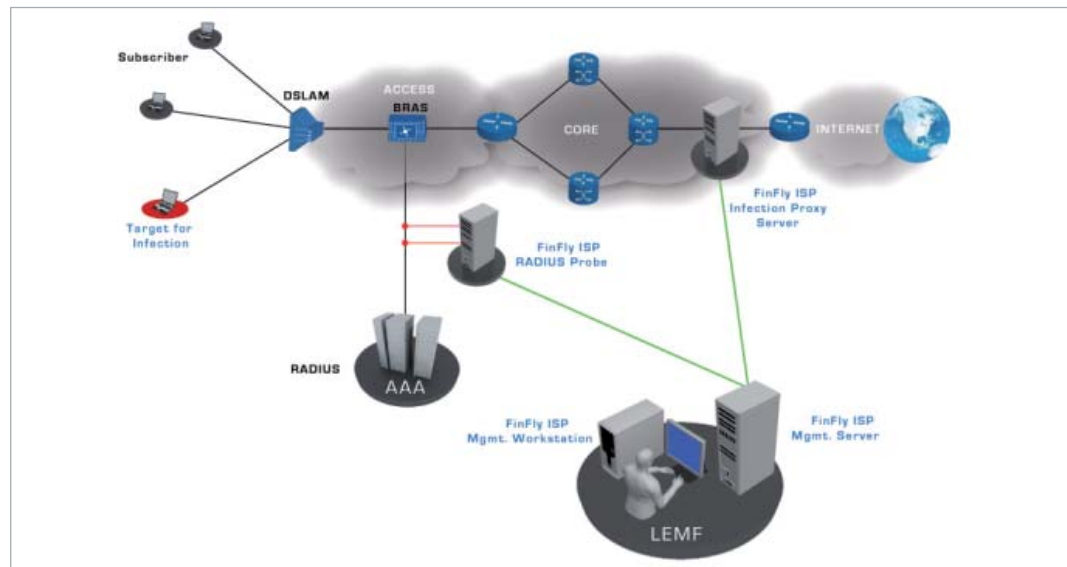
- Stealth: Hides software deep inside infected phone
- Communication: Full monitoring of all activity
- LocationTracking: via GPS and Cell-ID
- Remote Audio Surveillance: Implemented through silent calls
- Supports all major phones: New Systems are permanently added

Target Features

- Basic Communication Interception like Calls, SMS/MMS, Call Logs
- Access to stored information like Address-Book
- Recording of incoming and outgoing E-Mails
- LocationTracking (Cell IDs and GPS Data)
- Live Surveillance through Silent Calls
- BlackBerry Messenger surveillance
- Supports all common phones: Symbian 8/9, BlackBerry, iPhone (jailbreak required), Android, Windows Mobile and Maemo

FINFLY ISP

The FinFly ISP System is designed to remotely install the Remote Monitoring Solution (e.g. FinFisher FinSpy) on selected Target Computer Systems by integrating the system into an ISP's IP-network infrastructure. FinFly ISP optional Addons include IP shaping and Blocking.



The FinFly ISP System is managed centralized from the LEA's premises using the FinFly ISP Management System.

The user will administer targets for infection by entering the appropriate target data via the easy-to-use GUI on the Management Workstation. The Management Server will distribute the necessary commands to the FinFly ISP RADIUS Probes and Infection Proxies deployed in ISP's network.

A Target is added to the FinFly ISP system using its access data like "dial-in phone no" or "username". In case the target has a fixed IP-Address this IP-Address will be entered into the system. In this specific case the RADIUS Probes are not involved in the Target Identification process.



MONITORING CENTER NEXT GENERATION (MCNG)

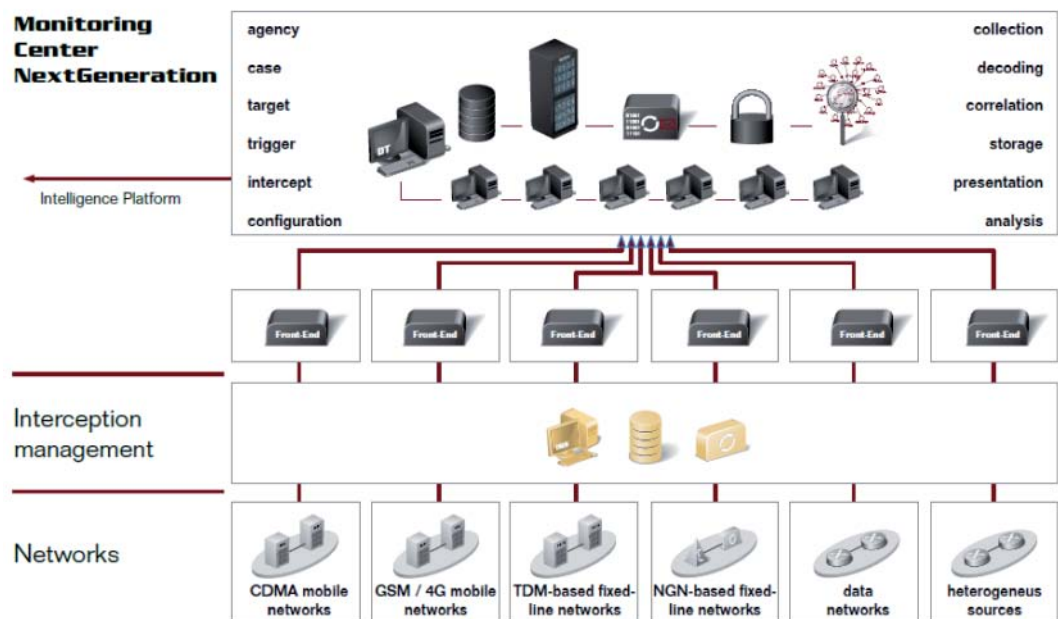
Our MCng is an advanced intelligence profiling solution that can capture, process and analyze all types of information transmitted over a wide spectrum of telecommunications networks. This includes analog as well as digital telephony, VoIP in next generation networks, internet traffic in fixed and mobile networks and satellite based communication.

With a modular design, the MCng can be highly customized to suit the intelligence needs of Law Enforcement Agencies. It provides a reliable, cost-effective solution compliant with the respective lawful interception standards and regulations. In addition, based on our long lasting experience in the telecommunications sector and having its roots in the telecommunications business unit of Siemens, adaptations to almost any type of telecommunications equipment is a regular service offered by us. The MCng is our new generation of Monitoring Center, designed to handle the scale, variety and performance of today's (and tomorrow's) converged telecommunications and internet.

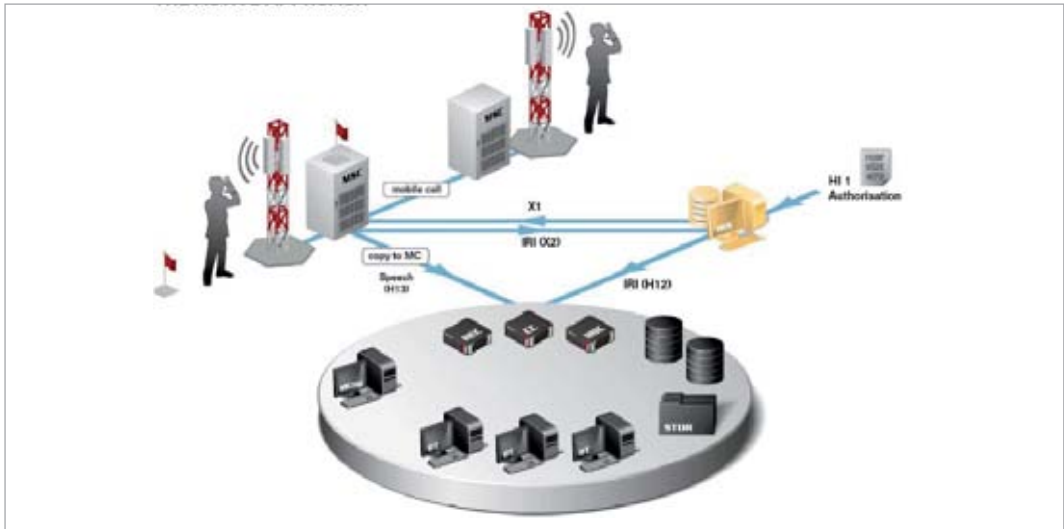
Besides covering the complete functionality of a Monitoring Center, the MCng feature set and roadmap clearly point into the direction of generating more sophisticated intelligence from several sources of information, and represent the realization of a so-called Intelligence Platform.

We launched the MCng in 2010 in order to support Law Enforcement Agencies cope with challenges in a rapidly changing communications environment. With customer requests for IP interception and the migration and convergence of telecommunications to 'everything-over-IP', a new architecture supporting new applications and services that could support massive amounts of data was needed and so MCng was created.

When developing the new generation of Monitoring Center, we focused on creating a platform that would interface with heterogeneous sources to merge and correlate data from other systems, and also allow the use of value-added solutions like Speaker Recognition, Language Identification, Indexing, Location Tracking, Association Analysis, etc.

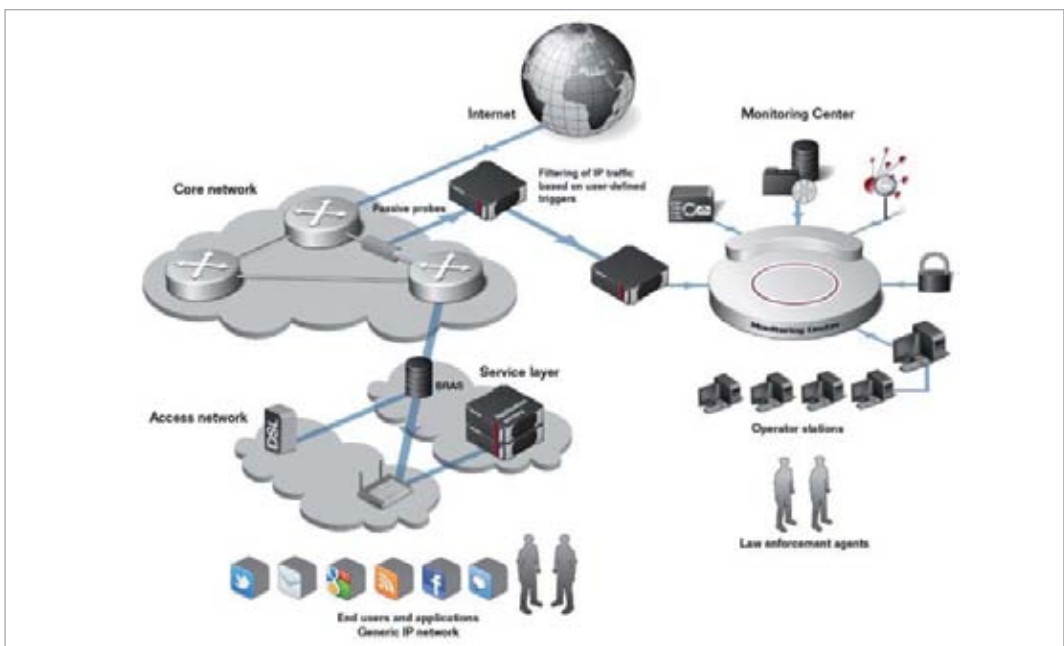


THE ACTIVE APPROACH



The active approach is commonly used by Law Enforcement Agencies that need to produce evidence during the investigation of a case. With the standardization of all the interfaces and the role of each stakeholder of the process (judge, Law Enforcement Agency, operator), the system is certified to produce correct evidence that can be used in legal trials.

THE PASSIVE APPROACH



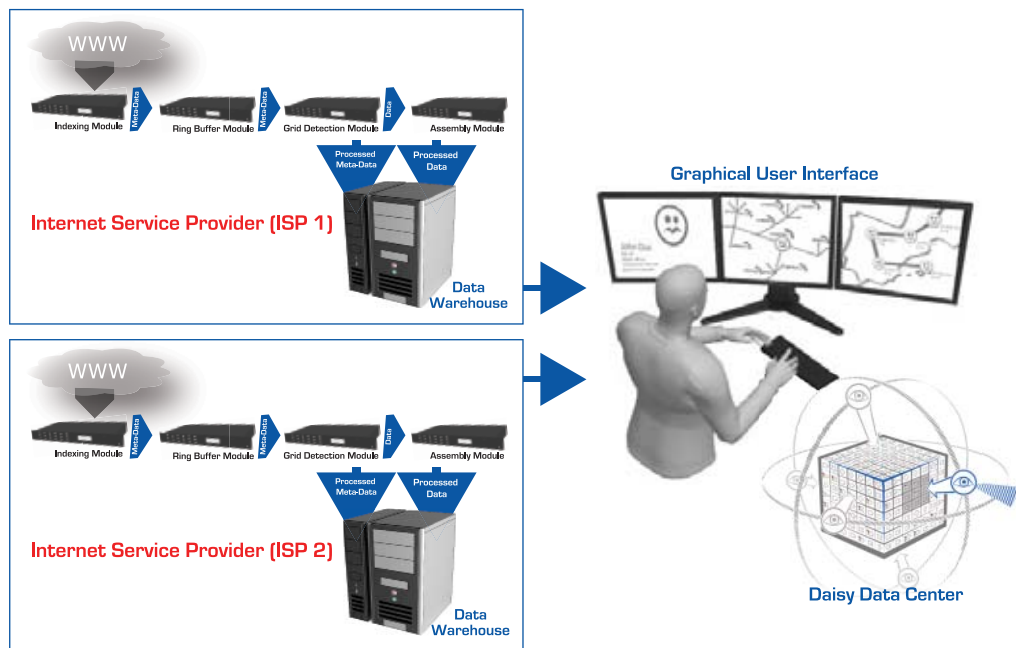
The passive approach is not standardized, thus allowing more flexibility but less precision. The communication types are intercepted via passive probes installed in the network and forwarded to the backend of the MCng for collection and analysis.

IP MONITORING

We created, using the Daisy product, a Mass IP interception system addressing the essential IP core to solve decoding obstacles in today's IP interception. Daisy observes, indexes and filters packet based and circuit switched networks. It is designed for mass data interception and data retention purposes. The complete Daisy system is built around the investigator. No deep knowledge on Internet Protocols or communication structures is needed to operate Daisy. Finding the needed results is as simple as searching the Internet. In general, Daisy is an active-active clustered system in all modules. It supports horizontal (extension of capacity) and vertical (extension of functionality) cluster mechanisms. Daisy is a customized software and hardware solution designed with the following aims in mind:

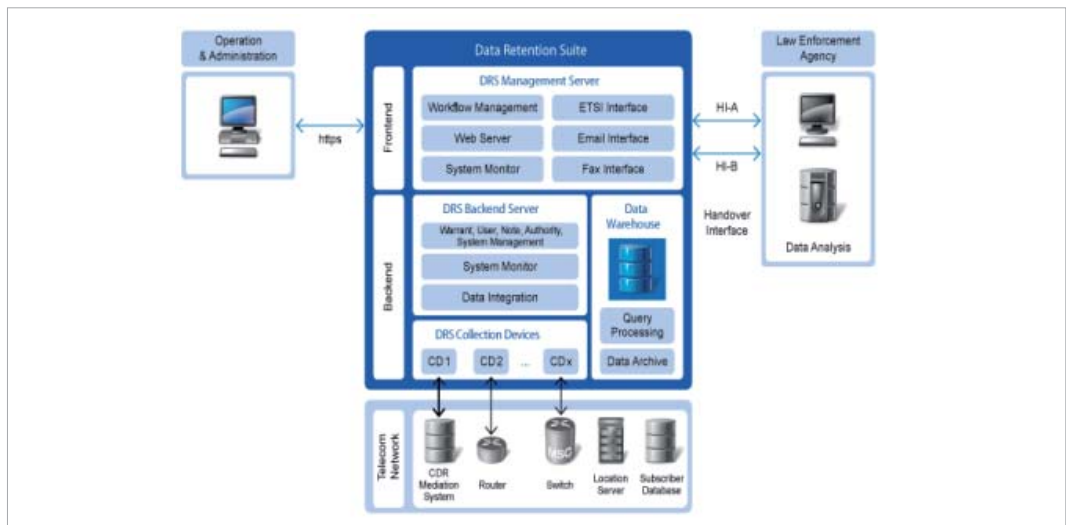
- to intercept IP mass data
- to intercept Circuit Switched mass data
- to handle most interfaces and protocol stacks
- to meet customers' needs
- to grow with customers' requirements and ideas
- to integrate seamlessly into existing systems
- to find results/information even in fragmented/incomplete data
- to create a module based open system architecture
- to allow integration from or into 3rd party systems due to open API's
- to use forensic data analysis
- to present quick and reliable results in several ways

Daisy is a customer oriented solutions. Its design follows a logical and modular architecture and presents a completely new approach. The technology behind Daisy solutions is unique and patents have been filed.



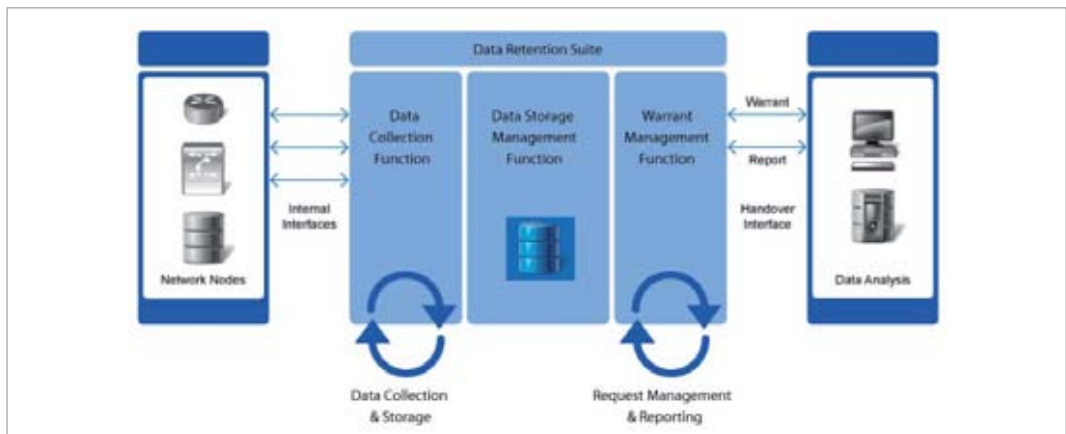
DATA RETENTION SYSTEM

Data Retention System refers to the process of storing call detail records and subscriber data for various telecommunications services for a period of several months and years. Law Enforcement Agencies and intelligence services regard the access to retained telecom data as an important pillar of criminal investigations and the prevention of terrorism. The common objective is to use the data to identify and trace suspects, uncover social networks among terrorists, or to collect admissible evidence for court proceedings.



KEY FEATURES

- Collects communications data (CDR, IPDR) and subscriber data from any telecommunications network
- Retains large amounts of data in a powerful and secure data warehouse
- Provides very fast search and analytics in billions of data records
- Automates request processing and delivers data to authorized agencies by fax, e-mail, or secure IP interfaces



COMMAND CONTROL CENTER, CENTRAL CONTROL ROOMS, CRISIS MANAGEMENT CENTER

When it comes to the core technologies of a modern command center for public authorities and organizations with security tasks, or other users, we provide all the necessary products from its own operation. This includes host computer software, a geographic information system and switching technology (radio and emergency calls). Our core offerings are complemented by special software for the smooth operation of technical administration in a command center, as well as the functional and ergonomically designed command center desk.

A large team of experienced programmers and software designers steadily drive the development of our software products. In the technical area, innovative experts continually push development.

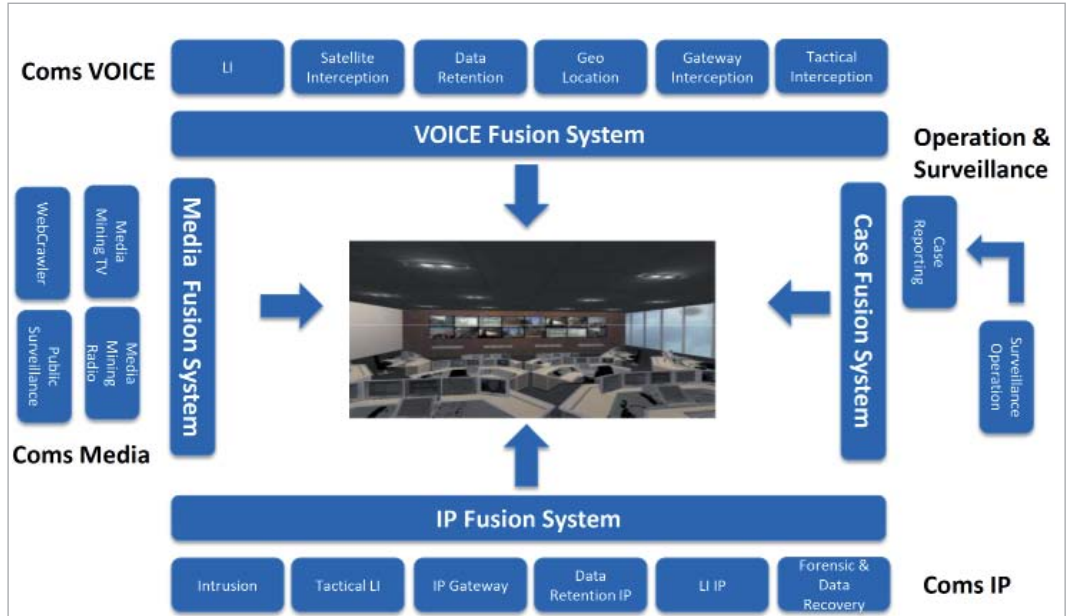
We have applied this philosophy to create all the necessary conditions to integrate technology – and this is done consistently, as only the manufacturer can do it.



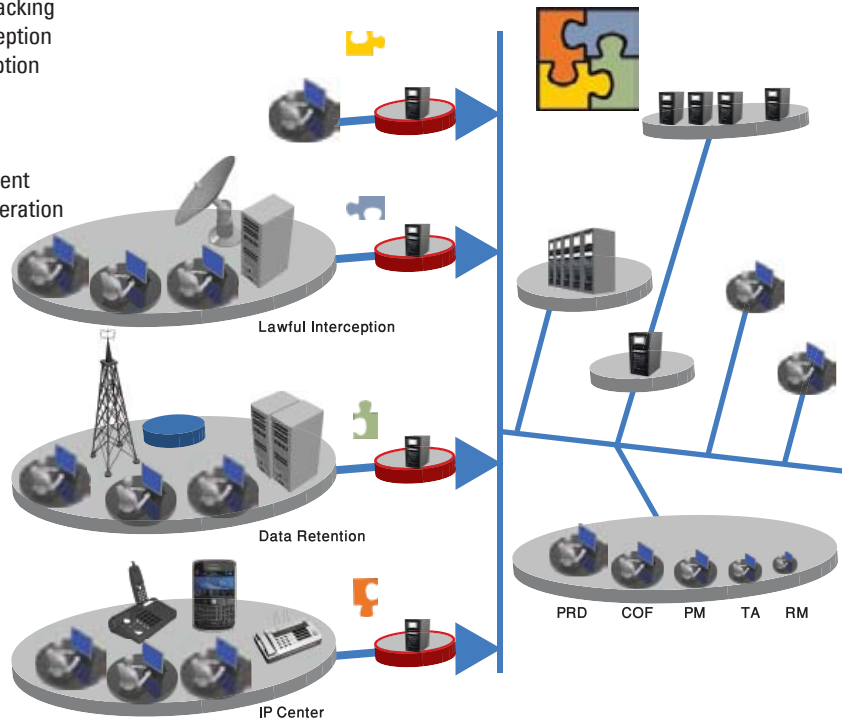
When it comes to the core technologies of a modern command center for public authorities and organizations with security tasks, the system provides all the necessary features and elements. This includes:

- Computer Software
- Geographical Information System (GIS)
- Switching technology (radio and emergency calls)
- Integrating and interfacing of various systems (communication-Tetra and Monitoring systems- Audio-Video-data-Telco, etc.

INTELLIGENCE SOURCES SYSTEM DESIGN



- Lawful Interception
- Satellite Interception
- Data Retention
- Geo Location Tracking
- Gateway interception
- Tactical interception
- IT Intrusion
- WebCrawler
- Media Mining
- Case Management
- Surveillance Operation



MEDIA MINING SYSTEM

Consider this. You want to see and hear “What was on the news about the United Nations this week.” That’s a simple request. Yet it could take you hours, maybe days, to sift through a week of broadcast news on multiple channels just to find and compile the relevant information. You would need an indexed archive, a search interface, and a summarized view of the sources to be able to systematically access the large volume of content. The Media Mining System provides all this and more. The Media Mining System takes audio input from various sources and in a multitude of languages to produce an indexed output in real time. This output can now be searched for relevant information. The system consists of three integrated modules, the Media Mining Indexer, the Media Mining Server, and the Media Mining Client, which work together to give you a revolutionary new capability: the ‘power of audio-visual information.





MEDIA MINING INDEXER

The Media Mining Indexer accepts media streams through media feeders. These convert input from sources such as radio and TV channels, press agency news feeds, archived media streams, etc to a format compatible as input for the Media Mining Indexer. The Media Mining Indexer converts this input into a rich-transcript XML-file describing the content and metadata about the content. This rich-transcript is sent to the Media Mining Server for storage, search and retrieval.

MEDIA MINING SERVER

The Media Mining Server creates an archive of all the indexed files it receives from the Media Mining Indexer. It facilitates selective retrieval of content by creating a structured hierarchy of information. The Media Mining Server also handles security aspects like that of access authorization.

MEDIA MINING CLIENT

The Media Mining Client is the graphical user interface used to retrieve information from and interact with the Media Mining Server. It provides the user with an interface to search, summarize, and replay audio video content stored in the Media Mining Server.

FEATURES:

- Accelerates the rate at which information is acquired and converted into actionable intelligence
- Offers better 24/7 worldwide media coverage
- Guarantees more timely delivery of content
- Incorporates time tagging of each word, which helps to rapidly identify and access relevant target segments
- Simplifies customization of search criteria to better meet individual needs
- Features summarization options based on speaker, topic, person etc.
- Includes translation services ranging from fully automatic machine translation to 100% accurate human translation
- Enables digital storage of all contents
- Produces industry-standard XML output which simplifies integration into a turnkey or customized solution

APPLICATIONS OF THE MEDIA MINING SYSTEM

- Broadcast news indexing: Broadcast news is indexed and annotated while it is being relayed
- Digital Media Asset Management: Annotation of video footage is automatic; no more manual annotation
- Keyword-triggered notification: Notifications can be sent to users whenever a specified keyword occurs
- Multimedia editing and cataloging: Structural summarization creates a base for efficient editing and cataloging
- Search engine for information retrieval from multimedia sources: Web-based search engines with multimedia search capabilities can be built
- Business news monitoring for financial analysts: Movement of stocks, mutual funds, etc. can be tracked for up-to-date financial analysis
- Hosted services for mobile devices: Click on a topic in your mobile device to get the latest audio-visual updates
- Interactive news services: News broadcasts can be personalized and delivered
- Media analysis: In-depth subject-specific reports can be created rapidly by selective retrieval of information



NEW REMOTE THURAYA MONITORING SYSTEM (TMS)

A new TMS Remote Lband system has been launched which can now be used with an existing strategic TMS for increased coverage of the Thuraya network. Each Remote system can monitor up to 7 additional spotbeams – expanding the monitoring capability of your existing strategic system for increased coverage of a selected area of interest; a single Remote System could double the area of coverage. Designed for maximum portability and rapid deployment, the Remote System is encased in a ruggedized, modular casing, which can be broken down into 4 individual components for safe transportation. The portable design enables the system to be easily relocated in response to changing targets and areas of interest. Users can assemble the system and it can be fully operational in 30 minutes.

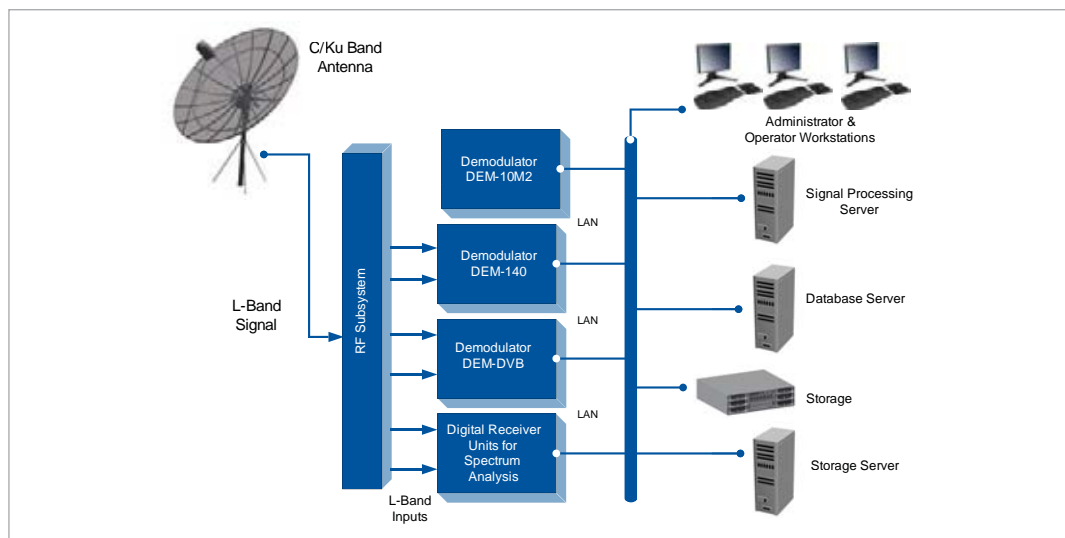


SATELLITE SIGNAL ANALYSIS SOLUTION

The SSA System was designed to assist the LEAs to quickly scan through satellite polarizations and to extract contents where possible to enable the LEAs to make informed decisions on which target country signals need to be intercept

TASKS OF SSA SYSTEM

- Scan connected Satellite polarizations
- Determine signal/modem parameters
- Write all parameters to database
- Demodulate satellite signal
- Determine decoding structure
- Decode satellite signal
- Extract content from satellite signal
- Analyze signal content (Users analyse content)
- System can also classify DCME types from live E1 satellite signals



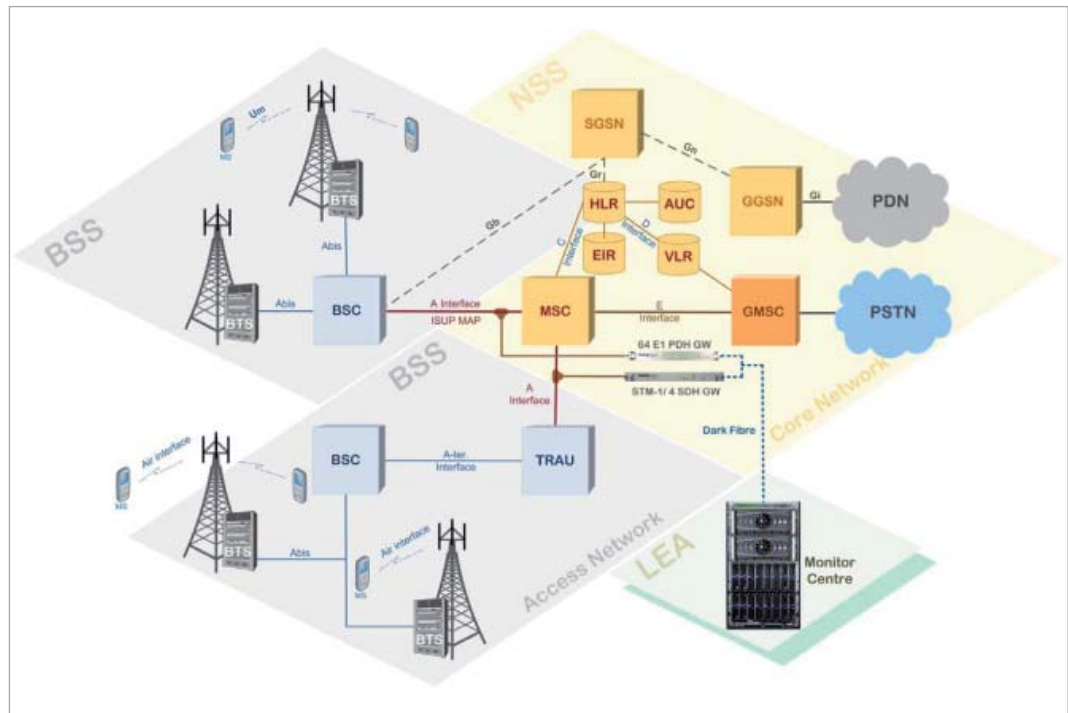


PASSIVE A-INTERFACE MONITORING FOR GSM NETWORKS, PASSIVE MONITORING OF ENTIRE GSM NETWORK

The A interface between the MSC (Mobile Switching Center) and BSC (Base Station Controller) consists of E1 or STM-1 trunks. The System solution monitors TDM.

A-Interface links between BSCs and an MSC. It detects calls and text messages on these links and captures IRI and uncompressed G.711 A-Law or μ -Law audio associated with the intercepts. Monitoring of A-Interfaces may be implemented with PDH (64 duplex E1) or SDH gateways (2 x STM-1). In future, we will also support direct Ethernet interfaces. A deployment unit may be used to monitor more than one A-Interface and a number of SS7 links at the same time. The A-Interface solution assumes that TMSIs are also unique within the context of a Location Area Code (LAC) and that the LACs are unique with the context of the PLMN identity. In cases where TMSIs are not unique, different name spaces can be configured. It may not be necessary to monitor all links between an MSC and its sub-tended BSCs.

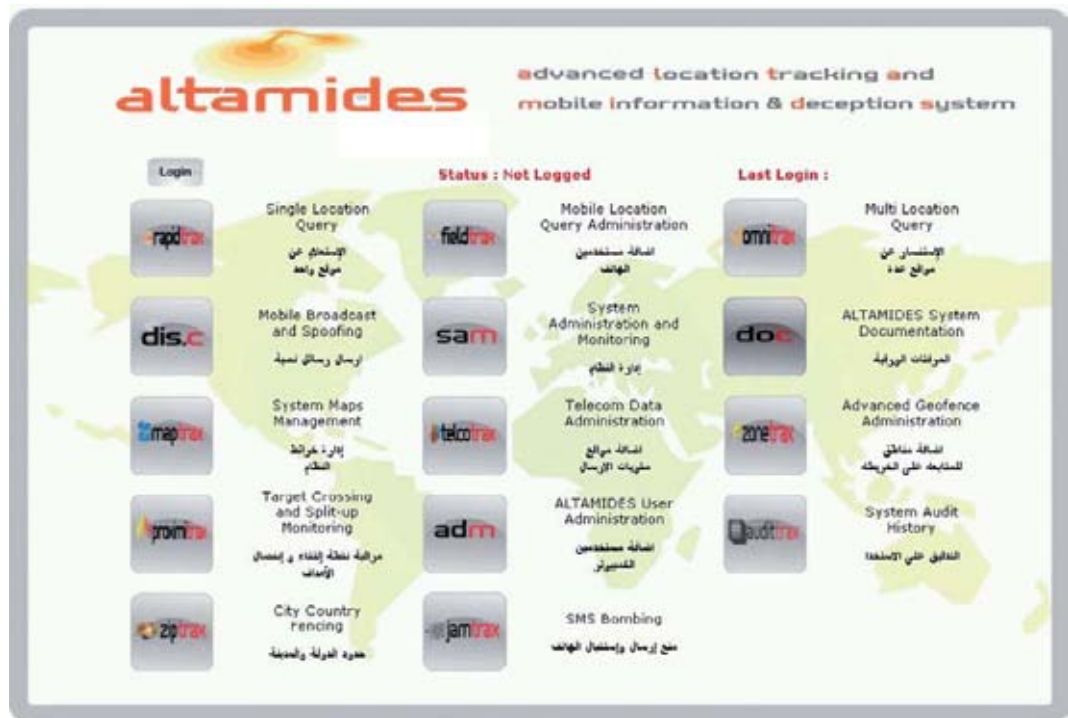
The A-Interface monitoring solution is illustrated in the following diagram.



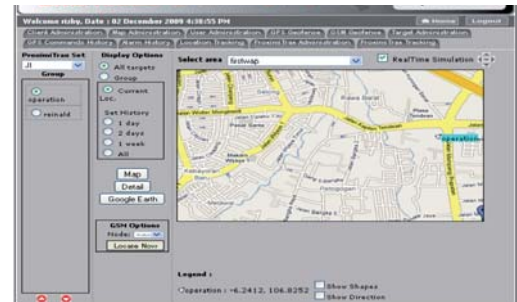
With the A-Interface Monitoring System either specific GSM-cells can be monitored or an entire GSM network. The system works completely passive and provides mass-storage capabilities and powerful analysis tools for post processing of huge amounts of data.

GSM LOCATION & TRACKING SYSTEM

The Advanced Location Tracking and Mobile Information & Deception System (ALTAMIDES) to be implemented is that covering the GSM networks in the area required. The purpose of this platform is to provide CLIENT with a facility to locate and report the vicinity location of a GSM device (i.e. mobile phone). The ALTAMIDES facility shall enable suitably authorized users to designate "targets," to make queries as to the location of, and have the result reported both in text and overlaid on a digital map or photograph. The following sections summarize in short the functionality and capabilities of the complete ALTAMIDES platform. After the following Commercial section, we propose the basic system and platform configuration to CLIENT.



ZoneTrax Cell Select and Deselect Option



ProximiTraxTracking Dashboard



MAPPLICATION SOFTWARE

Operating in unfamiliar areas can be challenging, especially when under time pressure. The new Mapplication software component introduces a mapping interface which can help operators to tackle this problem and run faster, more effective missions.

Network structures can be difficult to analyze, Mapplication assists by plotting cell coverage graphically in the mapping interface.

DF operations can be improved by using Mapplication to highlight the boundary of the target cell, reducing the search area.

Transmit power requirements may be hard to judge at the first attempt. Using Mapplication's TX range feature gives the operator a graphical estimate of unit coverage area, allowing better adjustment of unit TX power.



It is now possible to operate the 3GN on its own, without a connection to an XPZ unit.

Mapplication is a new software component which has capability in the following functional areas:

- Geographical Map loading
- Cell Site Analysis and import of survey data from the separate Network SurveyTool product which is also new for this release
- Display of predicted XPZ/3GN unitTX coverage at various bands, TX Power Level, terrain, etc.
- Display of current unit position on map
- Display of unit position history on map regarding current/previous Locations.

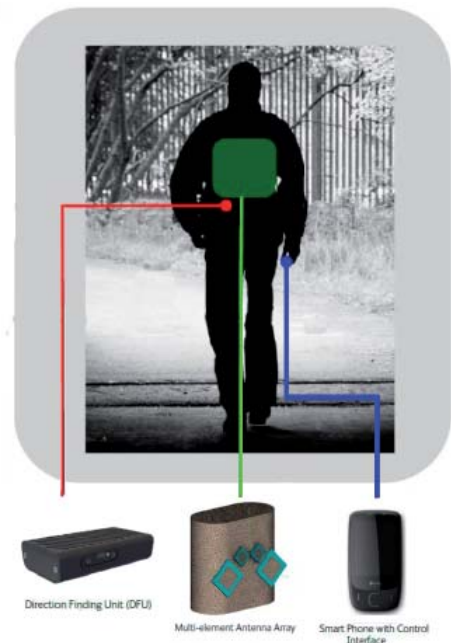
3G HANDHELD DIRECTIONAL FINDER

The 3G Hand Held Direction Finder (3G-HHDF) is a lightweight, portable, state of the art device for tracking and geo-locating cell phones.

The 3G-HHDF works with the 3GN's 3G Blind Call feature to allow tracking of W-CDMA devices. It is also backwards compatible with GSM.

The 3G-HHDF is controlled by a smart phone connected to the unit over a Bluetooth link. This makes the unit easy to configure and use without attracting attention.

The 3G-HHDF features multiple feedback mechanisms to cater for a variety of mission scenarios. Choose from visual, audio or vibration feedback depending on the operational requirement.

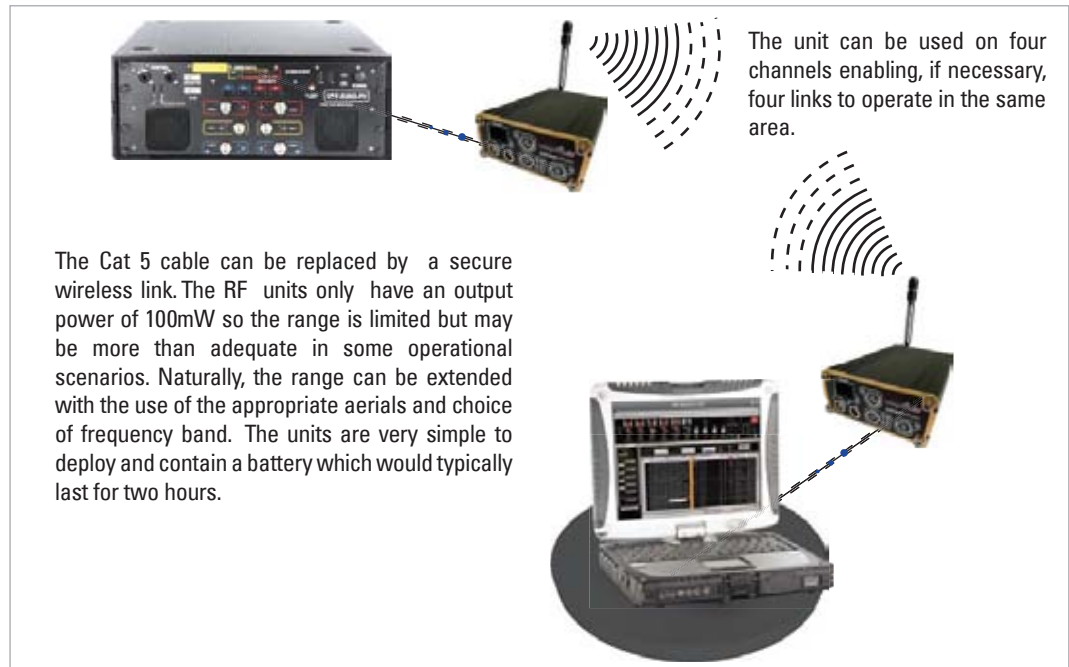


XPZ WIRELESS IP

The XPZ is normally controlled by a Cat 5 cable that connects the laptop to the XPZ. We can provide you our secure wireless IP connection instead of the cable connection enabling remote controlling of the XPZ from a safe remote location.

This is possible in different ways:

- RF units**
- High Powered Wi Fi units**
- COFDM MESH units**



The unit can be used on four channels enabling, if necessary, four links to operate in the same area.

The Cat 5 cable can be replaced by a secure wireless link. The RF units only have an output power of 100mW so the range is limited but may be more than adequate in some operational scenarios. Naturally, the range can be extended with the use of the appropriate aerials and choice of frequency band. The units are very simple to deploy and contain a battery which would typically last for two hours.

BODY-WORN IMSI CATCHER

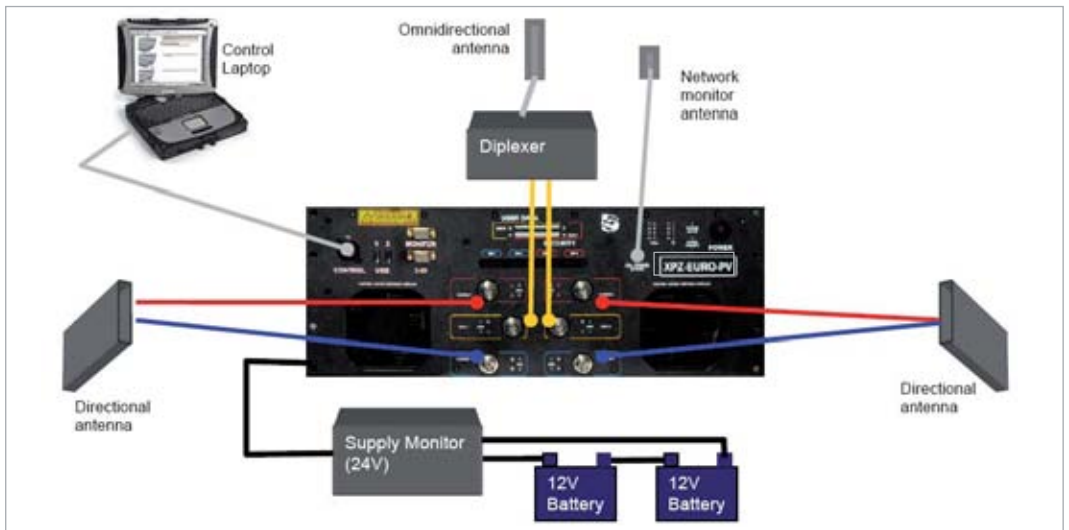
The new generation of GSM & 3G IMSI & IMEI acquisition technology, designed for rapid Target(s) identity acquisition.

Utilising our exclusive PAF (Patent Applied For) technology the system is able to acquire identities without any set-up or network analysis required, regardless of the number of networks operating whether GSM or 3G.

The unit is optimised for short range covert operation, designed to allow users to get close to Target(s) to maximize the chances of only catching the Target(s) identities and minimal unwanted collateral. The solution can be used as a standalone device or integrated into wider data-gathering and geo-tracking systems.



GSM OFF-AIR TACTICAL SYSTEM INTEGRATION EXAMPLES





WIDEBAND PASSIVE INTERCEPTION

Wideband Passive Interception: a passive interceptor based on a specific radio frontend that covers the whole GSM radio spectrum. It automatically decodes and analyzes the signals exchanged off the air on GSM cells. The receiver is wideband, this means it can handle many more cells and simultaneous communications than narrowband receivers.

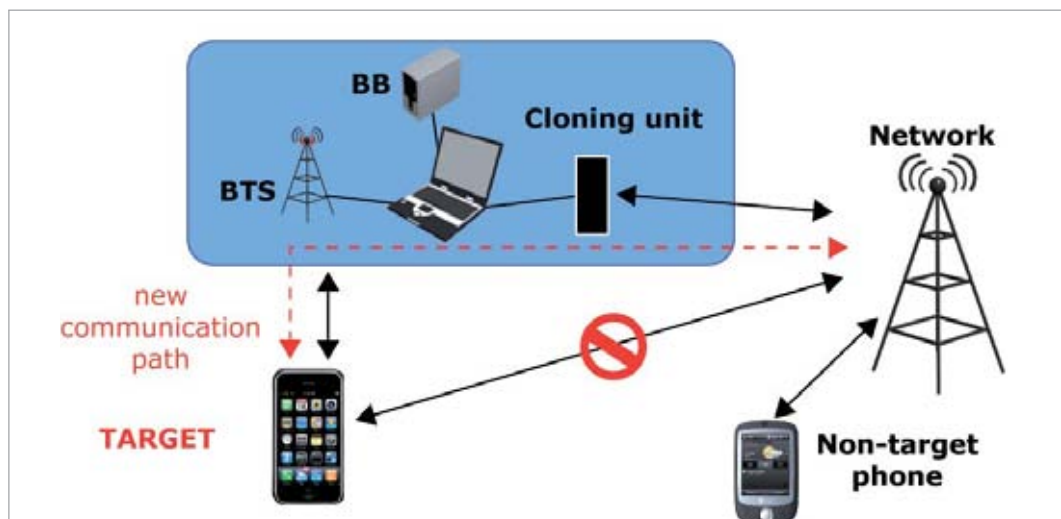
The solution Gamma uses is a Wideband receiver to perform Voice and SMS decoding in real time. To reach this performance it cannot manage the whole band simultaneously, the GSM traffic needs to be intelligently filtered first, normally using Network Operator cells as the criteria.

Compared with Narrowband solutions the key benefits of using our system are:

- MASS interception regardless of the number of cells
- Real-time performance
- Target priority management
- Exhaustive interception of signalization and SMS
- Portable solution

THE KEY FEATURES OF THE SYSTEM ARE:

- Cannot be detected by the Network Operator or Targets
- Multi-band coverage, covers the full DCS or PCS band
- Captures all GSM signalization. Note this is interesting to detect target presence in the controlled area even with no communication
- Intercepts and records on the controlled cells, from 1 to 20 simultaneous Voice communications (uplink and downlink)
- Allows user to make free interception of voice and SMS on the monitored cells with an advanced target and priorities management
- Full Handover management capability, means Targets can be intercepted even if they are mobile
- Intercept all the exchanged SMS within an area, all latine and non latine character handled
- The system can be used in two kinds of operations: Infrastructure mode or Tactical mode
- Very easy set up, simplified GUI to scan GSM cellular environment, choose the desired cells to intercept and monitor the intercepted SMS and voice calls
- Highly portable, can be operated from AC , DC or with batteries



MASS INTERCEPT - NARROW BAND SOLUTIONS

The system is intended for passive real time GSM monitoring in the following bands: 850, EGSM/DCS, PCS.

The main idea of this system is to create a clone of the target's handset, catch its real radio traffic and discover information from the coded part of the session (coded by A5.2 or A5.1 GSM algorithm).

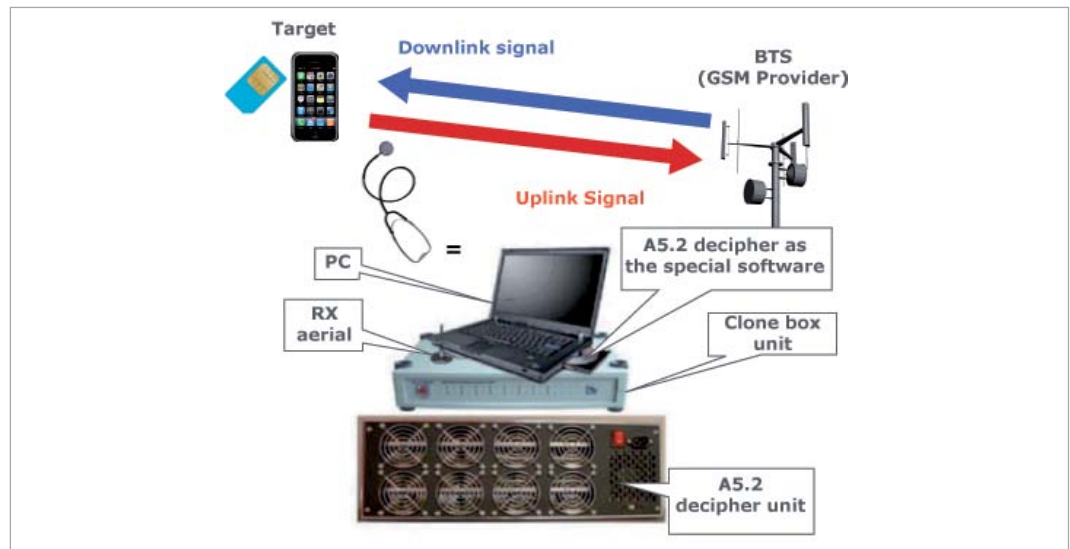
A5.2 decipher is represented as special software in the operator's PC. A5.1 decipher is implemented as a separate multiprocessor unit.

Useful for operation with all GSM providers, who encrypt OTA data by A5.2 and A5.1 ciphering.



FEATURES

- Fully passive control of forward and reverse ARFCN channels
- Real time GSM A5.1 decryption
- The system operates secretly on long distances
- Random and selective operation modes
- The system supports Frequency Hopping and all types of voice codecs: FR, EFR, HR, AMR
- The system records voice sessions, SMS messages and call related information to HDD
- 8 full duplex channels in one clone box unit. Clone box multiplexing possibility
- **BRAND-NEW FEATURE:** if you use our Passive system together with Active, you can get the public numbers of the wanted IMSI/IMEI
- Automatic speech recognition (voice identification) system
- LAN and USB connection
- High equipment's reliability



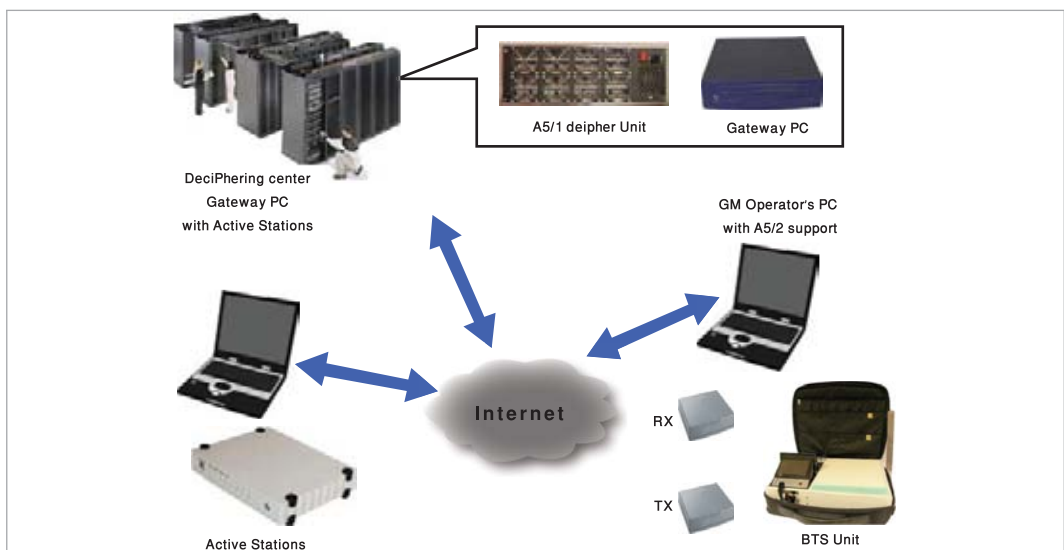
TARGETED INTERCEPT

The system is intended for active real time GSM monitoring in the following bands: 850, GSM/DCS, PCS. The main idea of this system is to create a fake BTS with the best operation parameters for mobile phones in the working area. Each of them will register in this fake BTS. From this moment all GSM connections can be monitored by the system. An Active Station unit is intended to provide communication for the fake BTS with the real network. An A5.1 decipher unit is intended for KC evaluation in order to discover the coded part of the air session, closed by A5.1 algorithm. The fake BTS and AS unit may be separated distantly and connected via Internet.



3G OPTION

To handle 3G networks there is a 3G option add-on system which can be integrated with the GSM system. This device will emulate a 3G network to attract 3G mobiles and, for designated Targets, selectively push them to GSM where they remain unless they are rebooted or pushed back to 3G by the GSM system. Non-target phones are not affected and remain in 3G-mode.





SURVEILLANCE VANS

We are a company backed by many years of experience in technical intelligence techniques and equipment.

We work exclusively on behalf of authorized Government Security Departments and Law Enforcement Agencies. As a result of many years of "active service" for clients worldwide, our assistance is highly sought after.

We will individually design surveillance vehicles to your exact requirements, meeting with you at all the major milestones during the design and integration process to ensure that each vehicle, not only meets your current needs, but can also be upgraded in line with future technological developments.

No two surveillance vehicles are alike. These vehicles are especially designed to meet individual needs, such as vehicle type, finish, operational usage, equipment for integration, etc. Whatever you are looking for, from a very basic surveillance, command or communications vehicle, to a complete mobile command and control center, we can provide a complete design and integration service.





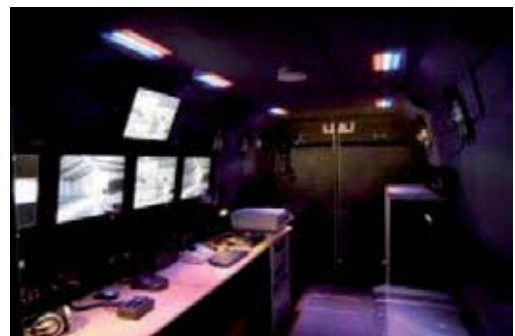
VAN CONVERSION

VEHICLE CONVERSION OVERVIEW:

- Includes: floor, walls, and front bulkhead, ceiling framing; minimum of 50-mm polar fiber insulation. The operational area inside the van has 85 percent ECM screening
- Equipment, counters and cabinets, carpeting, Formica finishing, wiring in plastic and flexible conduit and junction boxes are provided
- The interior lighting package includes all necessary equipment and installation
- Air exchange system
- Bench seat with 2 seatbelts (fitted when space allows)
- Storage pockets
- Fixed front bulkhead wall with sliding entry and exit door; side door window disguises video viewing ports, IR Plexiglas inserts and lens boot
- Main operator's control panel controls all surveillance equipment and also monitors the battery status and current draw of the operating equipment
- Operator's chair with adjustable back, 360-degree swivel base, rail mounted
- Auxiliary Power System
- Freon Compressor Powered Low Noise Air Conditioner
- IR Viewing Port Panels

BASIC EQUIPMENT INSTALLATION:

- Video Observation System 360° day and night
- Specialist Audio Receivers (Digital & Analog) with Remote Control
- Video Diversity Receivers plus Outstation Remote Control Links
- Audio Control System
- Video Audio Matrix
- Video and Audio Processing of Targets
- Command and Control Software
- Communications Equipment
- Vehicle Security Alarm System
- Specialist Covert Antenna



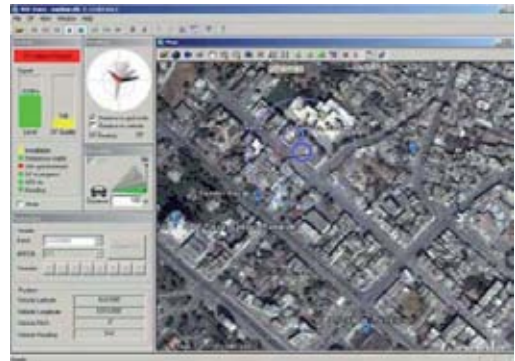
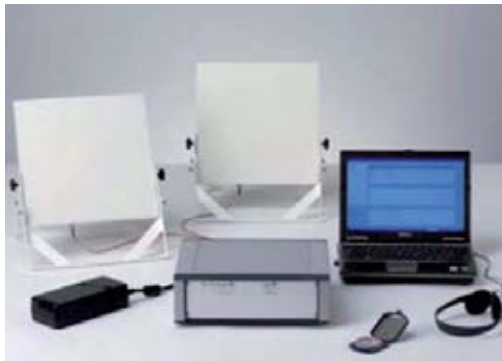


COMMUNICATIONS MONITORING VAN INTEGRATION

Model 7007 Communications Monitoring Surveillance Van represents a new era in communications monitoring platforms integrating live off-air monitoring of GSM, UMTS, DFT Thuraya-Satellite Monitoring and IT wireless LAN Intrusion. The Communications Monitoring Surveillance Van also provides links to the endusers headquarters enabling on-site surveillance operations to be carried out quickly and effectively. The Communications Monitoring Surveillance Van platform can be installed into various vans (i.e Mercedes Sprinter, Toyota Hiace or GMC Cargo Van) and provides operating areas for up to 3 operators. Included in the van is technical analysis and workshop support areas. The Model 7007 is constructed of high quality material and is built by craftsmen with over 30 years of experience in vehicle design and conversion.

Equipment Installation Options:

- Active Off - Air System Mobile Version
- Active Off-Air UMTS
- GSM Mobile Tracer & Locator
- GSM Vehicle Direction Finder
- Thuraya Satellite Monitoring System
- Wireless LAN Interception
- RF Monitoring
- Passive Monitoring
- Includes floor, walls, and front bulkhead, ceiling framing; minimum of 50mm polar fiber insulation. The operational area inside the van has some ECM screening
- Secure Storage of Equipment





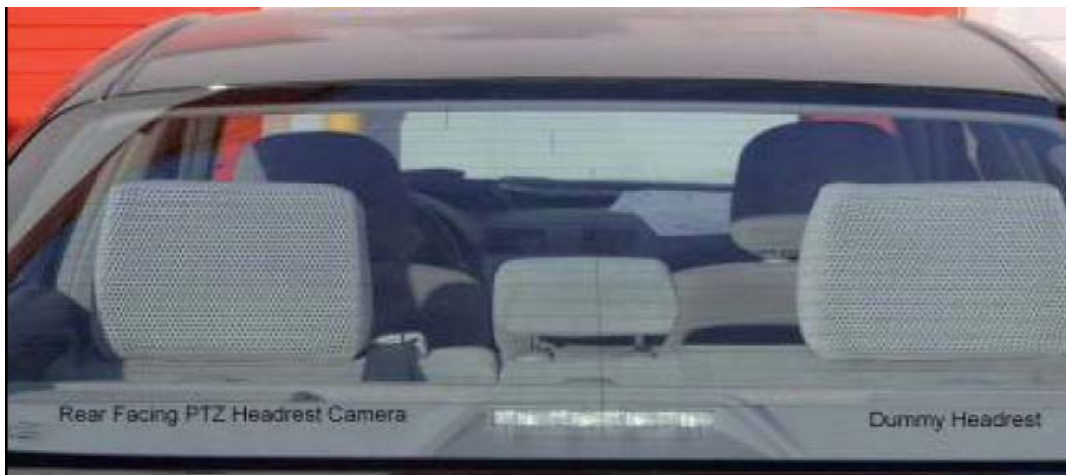
CAR SURVEILLANCE SYSTEM

The Car system provides a 12v compact and versatile solution for multiple camera video surveillance, allowing up to 6 cameras to be connected. Each of your vehicles will be supplied with three fixed lens cameras and one rear facing intelligent Pan/Tilt/Zoom, Day/Night camera rear facing concealed in a headrest.

All controls for the Surveillance system are provided from the compact, ruggedized hand controller, which provides a high resolution 2.5" LCD screen for spotting and playback purposes, an easy to use joystick control for pan and tilt operation and selection of all camera functions via the membrane keypad. Full playback control of the recorded images is also provided from the hand-controller, including selectable playback speeds, to allow fast reviewing of recorded images.



REAR FACING PTZ CAMERA





**TECHNICAL SURVEILLANCE
SYSTEMS - VANS/CARS**



REARVIEW MIRROR



3G TRANSMISSION SYSTEM



AUDIO MICROPHONE SYSTEM



GEOGRAPHIC INFORMATION SYSTEM





LONG-RANGE AUDIO CAPTURING & RECORDING SYSTEM

The Audio Scope System is a high-performance audio capturing and recording system customized for the intelligence end-user. The unit allows an operator to zoom in on a particular object and record required sound in much the same way as a camera zoom in on a picture. This makes the unit an ideal solution for separating out conversations in noisy environments. There is both fixed and mobile solutions.

The core component of the unit is a microphone array composed of 285 individual microphones integrated in a slim 1.5-meter dish.

The exact direction for sound pickup is steered from the video screen without any physical movement of the dish. The advanced signal processing makes the targeted sound source clearly audible even in a noisy environment.

ZOOM IN ON SOUND SOURCES POST RECORDING

Any audio missed in real-time can be captured later in replay. This unique function is ideal for crowded places where the operator does not know from whom or where he would like to separate the sound until later.

INTUITIVE USER INTERFACE

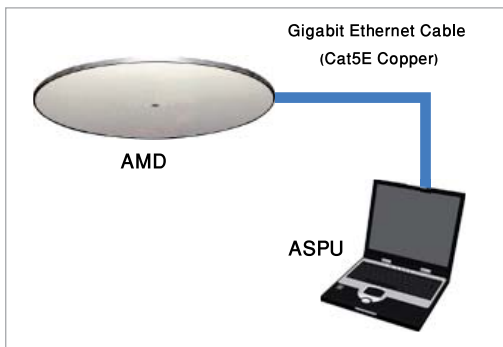
The system's very intuitive user interface offers fast, accurate operation of the unit. The operator monitors the live on-screen view from the camera, and simply moves the cursor to capture selected audio. The trackball is used to follow moving objects and the jog wheel to go back in time for replay. The system supports multiple output channels and the operator can select up to five listening zones simultaneously – both in real-time and in replay. The operator can also choose to select filters to eliminate undesirable sound and noise.



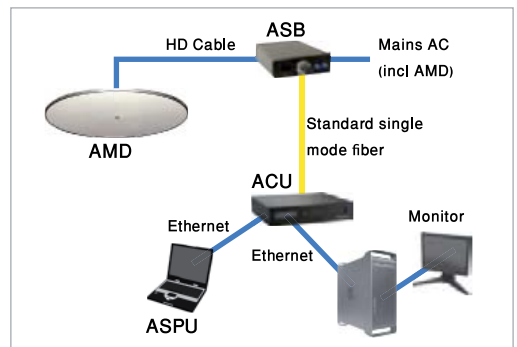
Mobile System installed in a car tire



Fixed System installed in the ceiling



Mobile Configuration



Fixed Configuration



AUDIO CONCEALMENT STANDARD OR UPON CUSTOMER REQUEST



UPTO 108 HOURS AUDIO IN COVERT PACKAGE!

LOWER POWER, SMALLER SIZE, 4 X LONGER RECORDTIMES!

The new unit is a huge leap forward in technology from our previous 6511 micro recorders. Record up to 4 times longer for up to 108 hours of high quality stereo audio. The 6511 Nano uses less power allowing it to operate longer on the same charge and its smaller size makes it concealable in almost anything!

The recorder charging cables and download cables plug directly into hidden ports on the concealments. The USB jump drive is a working 4 GB jump drive that records even while plugged into a PC!

Shown above are some of the most popular concealments, but given the tiny size of this recorder, the options are endless. Contact us for custom concealment work or select one of the concealments for your order.

POPULAR CONCEALMENTS

- SUNGLASSES (NEW!!)
- ZIPPO LIGHTER
- CASIO GSHOCK WATCH
- LEATHER KEYCHAIN
- IPOD CLASSIC
- KEYFOB
- ITOUCH
- USB JUMPDRIVE

AUDIO CONCEALMENT SYLLABUS

- 1 - Fitting covert microphones
- 2 - Producing preamplifiers
- 3 - Body-worn concealment techniques
- 4 - Audio deployment in cars
- 5 - Audio deployment in rooms
- 6 - Producing concealment installations
- 7 - Modifying high-tech digital transmitters
- 8 - Practical surveillance exercises
- 9 - Modifying GSM phones
- 10- Selecting the right power supplies



TECHNICAL SURVEILLANCE EQUIPMENT



SMALLEST SIZE 8 HOUR AUDIO/VIDEO RECORDER

Model 5618 Nano is the smallest audio/video recorder offered by us. Its miniature size allows it to be concealed in almost anything! The Model 5618 Nano records 8 hours of high quality video and audio and uses a flat lithium rechargeable battery that is external to the slim chassis. It uses 25% less power than other recorders and mates with the new super tiny NANO2 cameras.



8 HOUR AUDIO/VIDEO RECORDER IN KEYFOB

Model 5618 Fob is the newest addition to our covert audio/video concealments. The covert key fob concealment contains a 5618 Nano that records 8 hours of 30 fps video and 8 hours of stereo audio. A one-piece solution for all kinds of undercover operations. The common key fob packaging contains an internal rechargeable lithium battery, internal microphones and a built-in low light camera. Hidden ports are located on the unit for download and charging.



8 HOUR AUDIO/VIDEO RECORDER FOR SHIRTS!

The new 5631 II is lower in power, smaller in size and has longer record time than its predecessor. The unit provides 8 hours of high quality audio and video with a swappable button head color camera mounted right onto the chassis. The 5631 II can be inserted in any shirt with a button placket making it a versatile recorder for a wide variety of users regardless of gender or size. The 5631 II is only 0.35" thick making it fit flawlessly in the perfect location for face to face operations.



64 HOUR AUDIO/VIDEO RECORDER

Model 5633 is capable of 64 hours of high quality audio and video recording. Four internal AAA batteries provide 9 hours of power. For longer sessions, external power may be used. The unit ships with an optional clamshell case for applications requiring a thinner profile (note: uses external batteries). The unit is also compatible with the Dual Camera and can be used with the IP-LINK for transmitting audio and video via secure broadband cellular link.



VIDEO CONCEALMENT STANDARD OR UPON CUSTOMER REQUEST



CUSTOM CONCEALMENTS AVAILABLE! CONTACT US TO DISCUSS YOUR NEEDS.

We make a wide range of concealment items for our recorders. Each custom concealment includes a hidden ON/OFF switch, a pinhole or shirt-button camera, external microphones and a secure pouch for the recorder. Many concealments allow easy access to the recorder for easy removal. All our concealments are crafted with the utmost care as the safety of our customers is our top priority.

Certain concealments such as the RADAR DETECTOR and GPS do not allow for quick removal of the recorder and are suggested for more dedicated use in the concealment. Not all recorders fit in all concealments. Please contact us to discuss your concealment requirements or to create a custom concealment for your team!

POPULAR CONCEALMENTS:

- Baseball Hat
- Shirts (Dickies, Carhartt, polo shirts, dress shirts, uni-forms, long or short sleeve)
- Jackets (fleece, flannel, denim, carhartt, dress)
- Purses, duffel bags, backpacks, day planners
- Aluminum coffee mug or water bottle
- Working Magellan GPS
- Working Radar Detector
- iPod dock / clock radio
- Keyfob (see 5618-FOB)

VIDEO CONCEALMENT SYLLABUS

- 1 - Fitting covert cameras
- 2 - Producing preamplifiers and microphones
- 3 - Selecting the right power supplies
- 4 - Body-worn video concealment techniques
- 5 - Video deployment in cars and rooms
- 6 - Producing video concealment installations
- 7 - Integrating video transmitters
- 8 - Practical surveillance exercises
- 9 - Through-the-wall-video surveillance
- 10- Integrating video GSM Links



TECHNICAL SURVEILLANCE EQUIPMENT



CAMERAS

ULTRA LOW LIGHT CAMERA

SIZE: 0.55" x 0.45" x 0.20"

- Ultra-VERSA: Swappable button head color camera with black, brown, white buttons or screw
- Ultra-PIN: Pinhole color camera
- Ultra-BW: Black and white camera for lowest light.

Available in pinhole or versa versions.



EXTREMELY SMALL LOW POWER CAMERA

SIZE: 0.30" x 0.375" x 0.20"

- Nano-VERSA: Swappable button head color camera with black, brown, white buttons or screw
- Nano-PIN: Pinhole color camera

50% LESS POWER. EXTREMELY SMALL SIZE!

3 MEGA PIXEL CAMERA

SIZE: 0.5" x 0.55" x 0.25"

- 3MP-VERSA: Swappable button head color camera with black, brown, white buttons or screw
 - 3MP-PIN: Pinhole color camera
- CAPTURES 3 MEGA PIXELS AT 15 FPS!!!!**



ADJUSTABLE LENS CAMERA

- Compatible with any of our recorders
- Available in focal lengths from 2.6mm - 25mm
- Pinhole lens only

DUAL CAMERA

Unique dual camera harness connects two cameras to one recorder and allows both cameras to simultaneously record. Available with black or tan cable.





TECHNICAL SURVEILLANCE EQUIPMENT



DIGITAL STEREO RECEIVER INC. IP

Model 1031 Stereo Receiver is a handheld unit providing digital wireless microphone systems, which offers extremely high quality audio output. It is a true dual diversity receiver designed to counteract multiple reflections in difficult radio frequency environments. Dual antennas and receiver channels operate in parallel with proprietary circuitry to identify and select the better input. Modern Digital Signal Processing is also employed to achieve the best possible results.

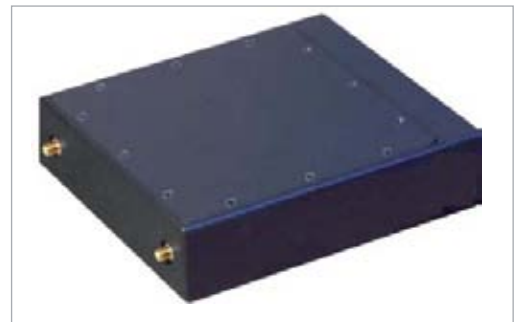


DIGITAL STEREO AUDIO TRANSMITTER INC. IP

Smaller than ¼ the size of a credit card and only 4 mm thick. The tiny transmitter can fit into practically any concealment. The low power consumption combined with outstanding stereo or mono audio (up to 8000 Hz response) makes this transmitter an outstanding performer. The ultra miniature positive lock connectors allow flexibility for microphone interchangeability and the connections will not come apart. A milled aluminum case provides exceptional durability.

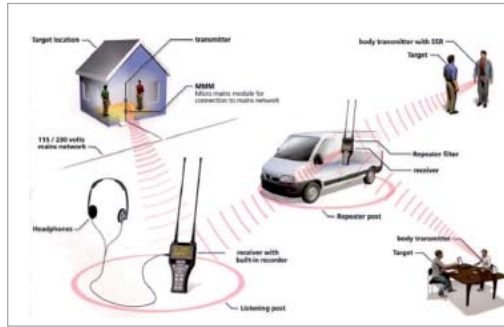
TACTICAL REPEATER

Our new Tactical Repeater provides increased operating range for Model 1032, Model 1034, Model 1114, and Model 1030 Digital Stereo Transmitters. With an output power greater than 1 Watt, the Tactical Repeater gives low power, ground-based digital audio transmitters the performance of higher powered units advantageously located. The Tactical Repeater is an In-Band Repeater, meaning that the standard 1031 receivers can listen to both the "direct" signal (when in range) as well as the stronger repeated signal. When all components are at ground level (1 m) the Tactical Repeater will increase a 100 mW transmitter's range by almost 3:1. If the repeater is elevated to 6 m, range will increase nearly 5:1.





TECHNICAL SURVEILLANCE EQUIPMENT



ADVANCED DIGITAL STEREO/AUDIO SURVEILLANCE SYSTEM

This 6100 system is a full-featured, portable digital audio listening and recording solution for Law Enforcement Agents, Intelligence Services and the Military. The system provides 57 RF channels and 8 RF repeater channels and is extremely suitable for multi-location surveillance operations. The 6100 Series receives, records, and plays audio from their transmitters.

MINIATURE DIGITAL AUDIO TRANSMITTER

The low power consumption makes it ideal in operational situations, where extended battery life is crucial.

The size of the new mini transmitter also makes it perfectly suitable for use in custom made concealments. Since the unit easily can be built into a multitude of everyday appliances, the possibilities for covert monitoring are numerous.



SQUARE MICROPHONE ARRAY

The unit is a high performance tactical Covert Audio Pinpointing microphone array designed for spatial audio capture. The unit is ideal for remote audio acquisition and speech enhancement in noisy environments. The system is controlled through a userfriendly interface where an operator can zoom-in on any one sound or conversation in much the same way a video camera zooms in on a picture. The system continuously records the audio to allow for both live and playback audio pinpointing. The size and shape of the array allows for a large variety of concealment methods.

STAND ALONE, SOLID STATE AUDIO RECORDER

The Beowulf II is a stand alone recording device. The very small and lightweight recorder intercept all ambient audio making it extremely suitable for close proximity operations. The unit also includes an auto-sensing function. When connected to a standard USB port on a Microsoft® Windows compatible PC, the Board will appear in one of two setups (depending on settings): "Show drive" (Read only) or "Drive is hidden" (Covert secure mode).





BOARD AUDIO RECORDER

The unit is an audio recording device, especially engineered and designed for easy integration into numerous custom-made concealments. The very small and lightweight recorder intercepts all ambient audio making it extremely suitable for close proximity operations. The hassle free design is delivered with external batteries, microphones and kill switch, and can be configured with matching battery packs and external switch/push button of your choice.



MINI DIGITAL VIDEO RECORDER

The unit comes without the internal battery compartment, and needs external supply by use of the Power Cable, the Multi-Cable or the Advanced Multi-Cable. General Features of the unit incorporate: Recorder memory 32 GB; built-in microphones; fast download: approx. 6 minutes to transfer 2.5 GB of data; Analog video output for handheld colour LCD monitor for pre-mission check of camera position, image quality and focus; and selectable video and audio quality from the software setting program

USB DUAL CAR CHARGER

The unit has a micro concealed recorder that uses less power allowing it to operate longer on the same charge and its smaller size makes it concealable in almost anything!. It has a 270mAh Battery, which gives 10hrs battery record time. The Dual Charger works in with any USB.



VIDEO-AUDIO CONCEALMENT KIT

The 6517 kit includes:

- 1 body-worn recorder
- 1 covert belt recorder
- 1 covert watch recorder
- 1 covert lighter recorder
- 1 covert keyfob recorder
- 1 GSM/recorder for rooms or cars
- 1 covert harness
- 1 set of batteries



MODEL 5610 COVERT VIDEO AUDIO RECORDERS OPTIONS

**Model 5610-3
5MP - 8GB**

Recording Time: over 100 minutes



**Model 5610 - Pen
2MP - 512 MB**

Recording Time: Over 2 hours



**Model 5610 - Pen Kit
2MP**

Recording Time: Over 2 hours



**Model 5610 - Set Kit
5MP - 8 GB**

Recording Time: Over 2 hours





VIDEO OBSERVATION CONCEALMENT
EXAMPLES WITH OR WITHOUT TRANSMISSION





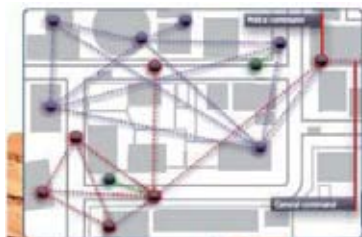
MOBILE MINI DIVERSITY RECEIVER

Model 7320-10, with its small and handy case with integrated 2-channel diversity receiver, brilliant TFT display and strong batteries, is the ideal solution for mobile applications. Available in 230MHz, 1.4, 2.4, 4.4 and 5.8 GHz., our diversity systems use a special technique for the interpretation of unequally received antenna signals. The "Maximum Ratio Combining" (MRC) procedure evaluates signals and combines the best parts in order to obtain a high-quality, failure free signal.

COFDM IP SYSTEM

The unit offers the capability to stream two video in several ways. Two video feeds can be streamed via our chaining interface over a single COFDM Transmitter, or there is the ability to switch allowing the best use of spectrum available for a particular operation.

The Transmitter has domo technology at its core and is ideal for establishing rugged wireless video links in all environments including mobile, rural and urban. Security is ensured with built-in 32 bit ABS encryption or, for greater security, AES128/256 bit encryption is also available, subject to export controls. The Transmitter is available in a variety of frequency bands from 300MHz to 5.0GHz.



The IP Mesh network constantly assesses which nodes are in range and the best route to send data between them.





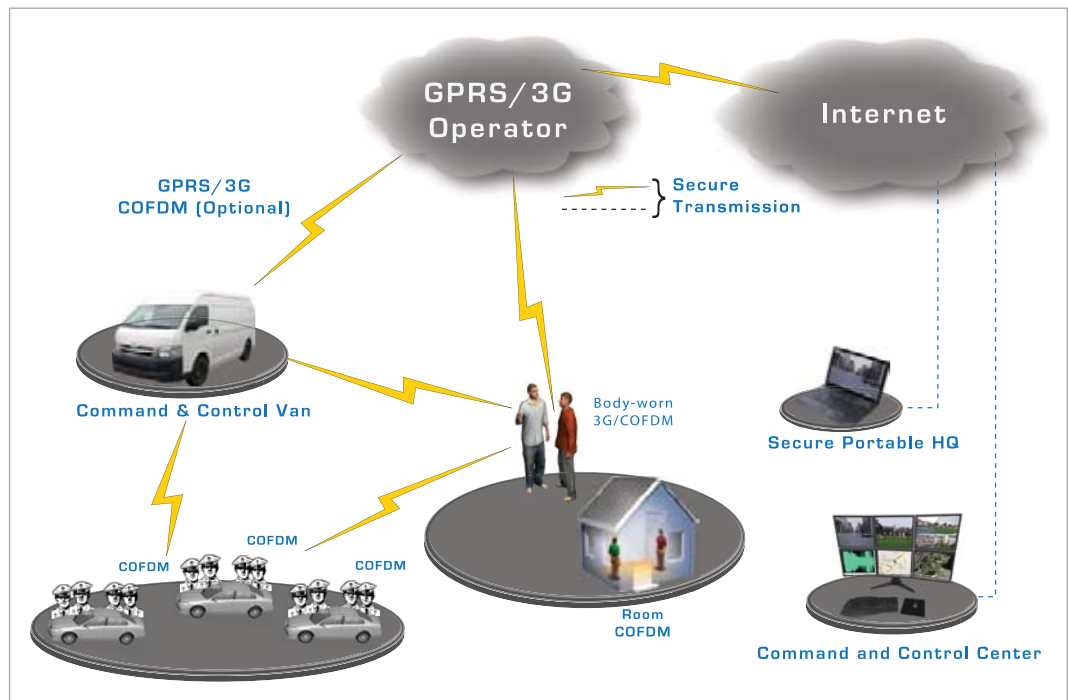
GSM AUDIO MICROPHONE

The unit is a miniature QUAD band GSM open microphone. Once deployed, the unit allows the surrounding area to be monitored using a mobile phone, conventional landline or any line capable of making/receiving calls. Audio monitoring is initiated by either calling the unit directly or by requesting an in-coming call using SMS (Dial-Back Request). Designed for covert surveillance operations the unit is fully equipped for rapid deployment requirements in terms of its compact size.



VIDEO ENCODER WITH INTEGRATED MODEM

The video encoder has been specifically designed to meet the exacting requirements of our customers. The compact, low power unit enables high quality real-time, low latency video to be viewed over narrow bandwidth networks, including GPRS and 3G telecoms networks, satellite networks, tactical IP radios and the Internet, with quality, reliability and useability unmatched by standards based products.





COVERT UHF DUPLEX VIDEO LINK SYSTEM WITH OPTIONAL IP LINK

Model 5824 consist of a digital audio and analog video Transmitter. Remote control allows the transmitter and voltage supply to the camera to be switched on/off from the receiver's controls. It is possible to connect 3 cameras to one transmitter and remotely select between them. A unique audio encryption key for the digital audio transmission is available. The receiver can handle up to 100 transmitters and each transmitter is identified by its own serial number.



GSM/GPSTRACKING SYSTEM A8

The Model 7312 Tracking System A8 is a GSM audio Transmitter with an Integrated GPS module, data logger, movement sensor, switched output and the option of Audio recording. Transmission of position data occurs via SMS, CSD and GPRS connection. The internal data logger uses micro SD card to store the traces. These data can be also received via CSD, GPRS or USB Connection. The control and the configuration of the A8 Tracking device is also possible via SMS, CSD, GPRS and USB Connection.

XRY FIELD VERSION

The latest field version meets the highest standards (mil-801). The less than 4 kg unit is designed for crime scene investigators, mobile units of military intelligence, law enforcement and international organizations, such as United Nations peacekeeping forces. These organizations often require portable, self-sufficient forensic kits that are flexible, quick to use and easy to link to headquarters or remote computers.

The all-in-one system features a Panasonic Toughbook U1 – with the latest version software installed and configured – cables, SIM card reader, infrared and Bluetooth communications, as well as hot swappable batteries that last up to 9 hours.





GOVERNMENT KEY COPYING SYSTEM

With the Model 2021 profile cutting system you can easily produce key blanks yourself. You can also produce a key from a photograph from the original key or lock. This system is foremost developed to make keys for master lock systems and for lock cylinders with special profiles. The Profile Cutting System is divided into two parts:

1. Cutting Program with Speed Profile: This program calculates the key profile and is absolutely required for the functioning of the profile cutting system. As a service for you the program is already installed in the case from the mechanic manufacturer, although not activated.



2. Mechanic Unit with Case and Mains Appliance: This unit is produced by a special mechanic manufacturer and includes the complete mechanic motion built in the case of the unit.

Photo of a lock



Copy of a key made from a photo



Manipulations kit for Dom locks



Dom security locks



EVVA 3KS Lock Decoder



EVVA 3KS sophisticated lock



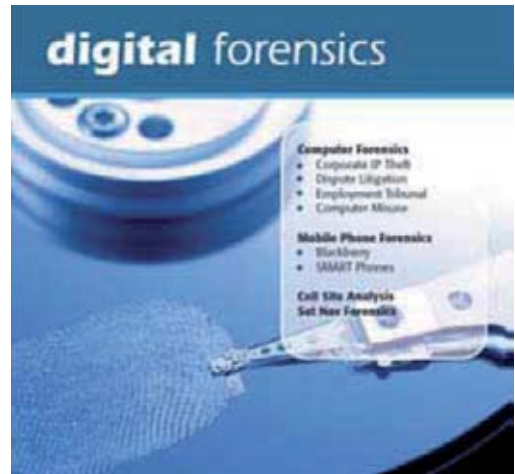


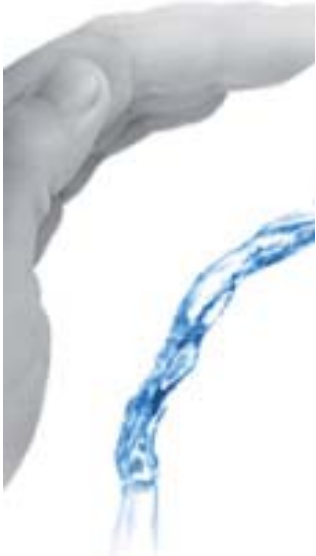
DATA RECOVERY & FORENSIC LABORATORY

Forensic data recovery is not to be confused with standard data recovery. Data recovery is the art of retrieving data from a source that is not easily obtainable, (mainly hard disk drives, memory cards, tapes, RAID systems etc). However, Forensic data recovery is different. In standard data recovery, the original data source, (e.g. the dead hard drive) is rebuilt, (if required), then an 'image' is taken, at which point the data recovery technician re-works the data so that it is useable to the client.

Computer Forensics is the function of utilising scientifically proven methods to assemble together and process data found on a digital device, (computer, hard disk drive, mobile phone, memory card etc), and interpret that data for possible use in a court of law or other theatres of investigation. The evidence may assist in the prosecution of a criminal, help in the defense of an accused person, or be of intelligence to an individual who is seeking knowledge for either personal or professional reasons.

Mobile phones are consistently used during many forms of criminal activity, and by performing mobile phone forensics on the cellular network usage of a particular mobile phone, it is possible to trace from where and when calls were made. This is particularly useful in stalking type cases, where a mobile phone has been used to harass another individual. A mobile phone forensics firm will be able to trace and quantify phone uses within the cellular network.





To be effective in TSCM it is essential to use trained and qualified people who have solid background knowledge of surveillance techniques and use the proper equipment. Gamma TSE is in a unique position to provide knowledge and equipment to counter threats and offer training in the latest equipment and techniques involved in information gathering and surveillance. The threat level for cables, LAN and Wireless LAN has increased dramatically. Although TSCM are described in more detail in our 2011 catalog, the following is a brief summary of our new products.



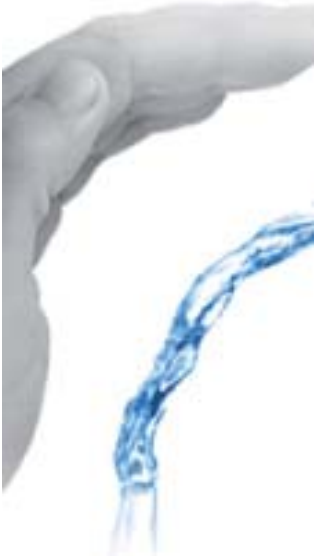
DIGITAL PROFESSIONAL POCKET BUG DETECTOR

The unit packs all the necessary features of a Professional RF (Radio Frequency) Detector: Ultra Wide Frequency Range (0 to 7200 MHz), High Sensitivity, 10 Segment Bar-graph display and Audio Confirmation. Once a suspect signal is detected its signal strength will be displayed with optional audio beep tone to help you pinpoint the signal source. The unit can also be set to silent vibrate mode for ultra discretion or concealed use, in a jacket pocket, for example. With the supplied earphones connected, the signal can then be demodulated and heard to confirm the presence of hidden microphones.

GSM/UMTS DETECTION AND LOCATION SYSTEM

Model 7558 system uses active, patented techniques to find any GSM and UMTS devices in the areas to be swept. When devices are found the unit operator can quickly distinguish between legitimate or authorized mobile phones and GSM bugging devices. Automated processes, network surveying, system set up and range selection, device detection and results analysis make the system effective and efficient. The system's database determines the threat level of a suspect device and is updated on a monthly basis to ensure the very latest threat information is available.





MOBILE PHONE DETECTOR

A highly sensitive handheld DF system, the mobile phone detector works in tandem with the Aappro 403T for rapid precision device location.

Advanced band-selection filtering coupled to our unique signal-detection algorithms and easy-to-use displays gives unprecedented sensitivity and selectivity.

The GSM unit can detect both 2G (GSM900 & GSM1800) and 3G (WCDMA / UMTS 2100) mobile phones.

ULTRAVIEW WALL ANALYSER

The Ultraview Wall Analyser works by transmitting radio waves into a wall. As the scanner is rolled across the wall, echoes are returned whenever there is a change in the medium through which the radio waves are passing (plaster to brick, brick to air, etc). The system works with all wall materials, including brick, blockwork, studwork, stone etc



3D X-RAY SOFTWARE

Model 7539 is used for upgrading mobile X-ray units from 2D to 3D imagery. All common types of X-ray image media can be used, even conventional films and storage foils, in case they need to be scanned later on. The digital 2D images, coming from a scanner or an image converter, can be individually enhanced and processed into 3D visualization by the 3D X-ray software. In the 3D viewing mode, zoom, detail, pan, tilt and rotation of the stereoscopic image is changeable by mouse control.

X-RAY SCANNING SYSTEM

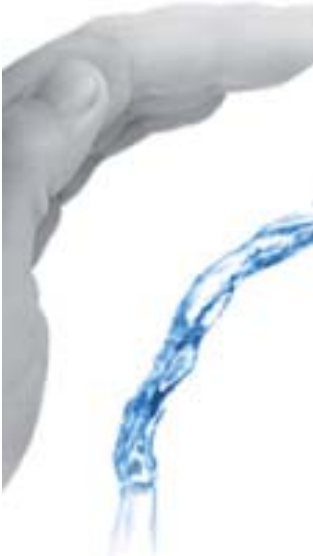
The unit is a lightweight, portable, battery powered x-ray scanning system designed in cooperation with first responders and EOD teams to meet the needs of the field operative. The slim detector panel is positioned behind the target; the generator is placed in front. Quick and simple to deploy, the system produces high quality real-time x-ray images for rapid and accurate decision making.





TSCM PERSONAL KIT

Model 7605 TSCM Personal Kit is designed to perform Intermediate Level Technical Counter Surveillance Measure operations, and contains equipment used in the 3 main areas of TSCM Sweeps. All concealed in a 'Cabin Baggage' approved Laptop Case, the TSCM Personal Kit will not look out of place being carried into a hotel, or into an office ensuring a level of covertness when entering a sweep area. This all-in-one kit will assist an Operator in a sweep, when the more expensive TSCM Technical Equipment is not available or cannot be used in location.



ADVANCED LAN/WLAN ANALYZER

Our powerful new advanced model 7543 Integrated Network Analyzer gives a clear view of an entire enterprise – providing visibility into every piece of hardware, every application, and every connection on a network. No other portable tool offers this much vision and all-in-one capability to help deploy new technologies and applications, manage and validate infrastructure changes, solve network and application performance issues, and secure networks from internal threats. It shows you where your network stands today and helps you accurately assess its readiness for the changes you need to make.

FAKE CELL MONITORING DETECTOR

The current method for the interrogation of GSM subscriber identities and/or equipment is to use the Model 4050 Fake cell site, and attract the target mobiles over to this Fake Cell. The unit can monitor the LAC, Power levels, and Neighbour lists for GSM and 3G and C1/C2, in the case of GSM. The 3G unit will generate an alarm based on any combination of values monitored.

Key features of the equipment are:

- Detects bogus Cell sites, possibly being used for IMSI capture or Call intercept
- Multilevel alarm/event triggers
- Generates alarms via Internet or text message
- 16 channels
- Constant monitoring of selected GSM sites
- Constant monitoring of selected 3G sites
- Remote connection via web interface





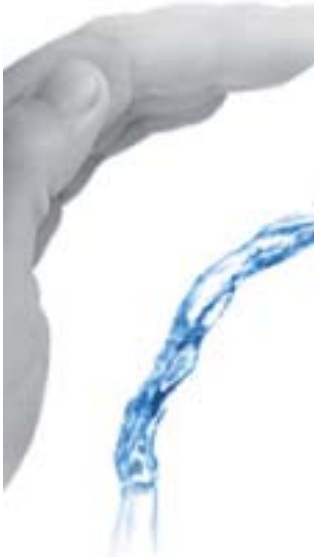
TSCM MULTI-PURPOSE SPECTRUM ANALYZER UP TO 24GHZ

The Unit is a hand-held spectrum analyzer with a rapid sweep speed and functionality suited for detecting unknown, illegal, disruptive, and anomalous rogue transmissions across a wide frequency range. This capability makes the Unit an ideal product for:

- Site Surveys for communications systems (cell towers, microwave links, etc...)
- RF emissions analysis
- Wireless service providers and installers
- Evaluating communication channel utilization
- Investigating misuse of the crowded RF spectrum
- Security surveys for eavesdropping detection

World communications systems are rapidly expanding in many areas especially mobile land and satellite based broadband communication systems. The Unit provides important tools to evaluate these systems and integrate them into ambient RF environments.

Managing the RF spectrum is critical to many organizations such as hospitals, airports, laboratories, businesses, construction sites, mining operations, shipping ports, and large cities.





VIP SECURITY PRODUCTS

G2 Systems' philosophy is that VIP Security Products should be offered as a whole range, offering everything from standalone products to complete system solutions, including training to support any government agency's goals of achieving successful VIP operations. Our new 2010 catalog provides a comprehensive selection of advanced VIP equipment. We have put together a brief selection of products below, but strongly suggest you view the complete 2011 VIP catalog. To order one please contact: info@gammagroup.com

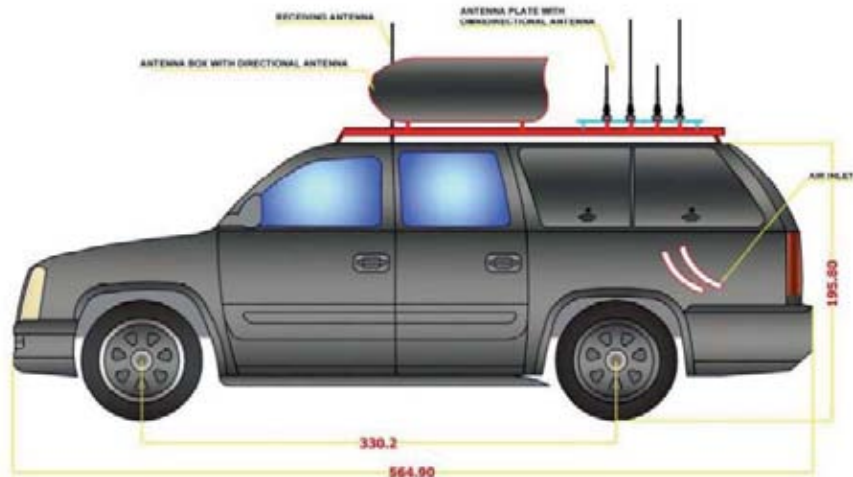
- VIP Security Products
- VIP Convoy Jammers
- VIP Portable Jammers
- VIP CBRNE Detection
- VIP CBRN Protection
- VIP Security Screening



- VIP Forward Observation
- VIP TSCM Detection
- VIP Secure Communications
- VIP Surveillance Kit
- VIP Personnel & Vehicle Protection
- VIP Training Course

VIP CONVOY JAMMERS

Model 3260 is our Turnkey 2-in-1 solution. The advantage is that you will not have any trouble with the additional alternator, as we had before, because it is all included. Why 2-in-1? Because it is the ideal solution for both applications (convoy and big places jamming). It is an active Turnkey jamming solution installed in a vehicle. It comes with installed Mil Spec alternator (> 200A, 24 V) for power supply for the jammer during driving (convoy jamming) and additional generator in the trunk which generates the power for stationary use (big places jamming). With the generator providing the power when stationary you can switch off the car engine during jamming and even go out of the car and do other jobs. Furthermore, it has an additional AC for stationary use so that the jammer gets cooled air, so when the engine and AC of the car are off, you can jam, for e.g., big places. The jammer is fully digital from 20-6000 MHz. The bigger the places are or the longer the convoy is the more Turnkey solution vehicles you take and position accordingly. We will provide everything (car, jammer, generator, 2nd alternator, installation in Germany = Turnkey). We can also install this system, for e.g., in a container if required with operator desk next to a government building.





PORTABLE VIP PROTECTION CASE

Model 3543 high power Jammers covering all frequencies:

- 850-894 CDMA
- 450-470 MHz, 15W
- 825-960 MHz, 18W
- 1805-1980 MHz, 17W
- 2110-2170 MHz, 15W (cover 3G)
- 2400-2500 MHz, 15W (cover WIFI)
- Total Output power: 80W
- Case size: 56 x 42 x 26 cm (pelican case 1560)
- Programming Software



3G DENIAL OF SERVICE SYSTEM

The unit forces 3G mobiles in a local area into using the GSM Network.

The system is self-contained and uses a Li Ion Battery to provide approximately 30 minutes of operation. The unit has 3 transmitters, summed into one 12 Watt power amplifier. All three transmitters can be set to different ARFCN's to be used in dense traffic areas where the target network employs more than one access channel.

UNDERVEHICLE SURVEILLANCE

Model 5501 Under Vehicle Surveillance System is designed for temporary deployment and portability between sites. The system comprises: Galvanized Steel Ramp with integral metal housed cameras and LED illuminators. These can be color cameras and white LED illuminators, or monochrome and IR LED illuminators. Control/Monitor Pack is housed in a portable rack mount case with removable front and rear protection covers.



ADVANCED HANDHELD MULTIPURPOSE DETECTOR

Model 9102 Advanced Handheld Multi-Purpose Detector is designed for use by first responders, homeland security, military soldiers, law enforcement and forensic chemistry personnel. It provides immediate identification of unknown solids, liquids and mixtures, including narcotics, explosives, white powders, chemical weapons, WMDs and toxic industrial chemicals - even through the walls of their containers.



BODY SCANNER

Model 9140 unit quickly creates a 3-D black and white silhouette of the subject revealing concealed objects. Operators can locate weapons, explosives, other banned items or even intellectual property. The unit can be upgraded in the field to take advantage of advanced, image-free Automatic Threat Detection software that is enhanced as new threats emerge. The unit allows operators to clearly view objects made of any material, including liquid, rubber, wire, plastic, ceramic and metal, weapons, contraband and other objects are quickly and easily located. The system utilizes harmless millimeter waves to generate a clear view in seconds, and is ideal for use anywhere that checkpoint security is needed, such as airports, military bases and border crossings, courthouses, embassies, prisons and other government buildings.



PORTABLE WALK THROUGH METAL DETECTOR

Model 9130 is the world's most versatile walkthrough metal detector as it can be deployed and transported to virtually any location and be up and running within five minutes by a single operator! Model 9130 operates from rechargeable sealed batteries, has zone specific detection and is designed for use in demanding environments. It is the only multi-zone metal detector small enough to fit in the boot of a car. Model 9130 is ideal for sporting events, conferences, schools, VIP security or for any event or location requiring high discrimination metal detection combined with ease of use and total portability.



PORTABLE HANDHELD EXPLOSIVES TRACE DETECTOR

The unit is a handheld explosives detector that rapidly detects and identifies trace amounts of a wide variety of military, commercial, and homemade explosives (HMEs). Its innovative design provides operational advantages that make it highly effective in real world detection situations, which have been proven time and again in customer evaluations.





RADIATION DETECTOR

A complete range of smart probes to enhance the detection capabilities of the system. Different probes associated to the radiation survey meter add:

- gamma and beta/gamma contamination monitoring for vehicles, aircrafts, personnel, ground
- monitoring personnel alpha contamination
- monitoring alpha contamination wounds
- search and management of gamma contamination



FOOD DETECTION KIT

The API Food Poison Detection Kit comes with a set of three separate detectors and everything needed to analyze a food sample and record the results for future use or as evidence. The Food Poison Detection Kit detects dangerous levels of more than thirty poisons. The detected poisons include compounds containing cyanides, azides, chromates and sulfides (Group I Poisons), thallium, lead, cadmium and mercury (Group II Poisons) and ALL arsenic-containing compounds.

CBRN VAN

The CBRN Support vehicle is designed to bring CBRN supplies to the CBRN incident. The vehicle can be of any variant or type. We will help you to work out the equipment that is required to support a Responders team.

Example:

- Small decontamination equipment
- Spare air cylinders
- Compressor air recharging air cylinders
- Spare CBRN suits/canisters/Boots/Gloves
- Hazard tap/markers
- Spare batteries
- Spare CBRN detectors



EOD VAN

EOD Vehicle is custom-built to incorporate the best available equipment and enables operators to provide a fast response to detect and dispose of terrorist devices. Each bomb disposal vehicle is specially modified and is supplied with an assortment of the most up-to-date IEDD equipment, depending on client requirements. A typical list of components would include the following: Search Equipment, Scene of Crime/Forensic Equipment, Identification/Analysis Equipment, Protection Equipment.



CBRNTHREAT REPORTS

This report is to help EOD teams that have had no previous experience with chemicals used as terrorist weapons.

This is the latest information on the capability of using chemicals as a weapon: The main hazard is that the chemical can travel down the wind line causing high casualty levels.

This document is for EOD teams.

Police forces and intelligence organizations may find this document useful.

Not for members of the public or media use.

This report is based on analysis from Gamma subject matter experts and has no warranty.





INTELLIGENCE GATHERING AND TECHNICAL TRAINING SERVICES

From Gamma International's regional headquarters in the UK, G2 Systems Ltd provides first-class security training services to governments and related organizations worldwide. Our clients also include security and intelligence organizations recognized by the United Nations, who seek assistance in improving their intelligence gathering capabilities over a variety of disciplines. For a complete 2011-2012 Training Catalog please contact us at: info@gammagroup.com



GOVERNMENT TRAINING SOLUTIONS

- 1- CMOE
- 2- Intelligence Gathering
- 3- Technical Surveillance
- 4- TSCM
- 5- TSCM linked to IT Threats
- 6- IT Exploitation Training
- 7- Intelligence Analysis
- 8- CBRN Threat Awareness

SURVEILLANCE COURSES

- 1- Overt Surveillance Techniques
- 2- Covert Surveillance Techniques
- 3- Operational Surveillance Methods
- 4- Intelligence Analysis and Evaluation
- 5- Technical and Engineering Support
- 6- Audio and Video Surveillance
- 7- Concealment Courses
- 8- Photographic Surveillance
- 9- Audio/Video Processing
- 10- Mobile Phone Forensics



IT EXPLOITATION TRAINING

Our IT intrusion training package provides the government end-user with up-to-date advanced IT intrusion tools and techniques to enable intelligence agencies to obtain information that can only be obtained by using IT Intrusion components.

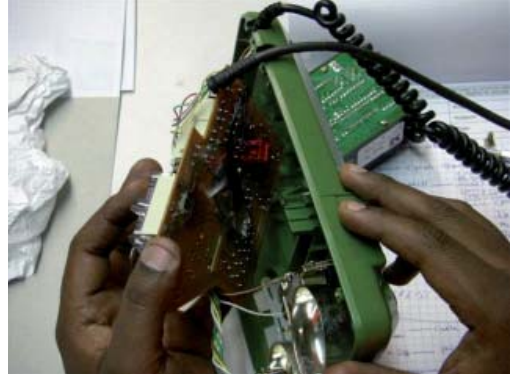
- 1- IT Information Warfare
- 2- VoIP Intrusion
- 3- Advanced Intrusion Techniques
- 4- Exploitation Techniques
- 5- Root-kits Training




TECHNICAL SURVEILLANCE COUNTER-MEASURES

The objective of training government TSCM teams is for trainees to be aware of all technical espionage threats and the procedures of search and detection.

- 1- Latest TSCM electronic threats
- 2- Prevention of bugging/infiltration
- 3- Cable measurement
- 4- Physical search
- 5- RF measurement
- 6- PBX/IT attacks
- 7- Securing IT facilities and data





CMOE COURSES

- 1- Technical Operations Training
- 2- Covert Technical Deployment
- 3- Covert CCTV Deployment
- 4- Advanced Operational Drilling
- 5- Operational Alarm Defeat
- 6- Magnetic Hotel Room Lock-picking
- 7- CCTV and PIR Defeat
- 8- Safe Manipulation
- 9- 'Silent' Drilling
- 10- Explosive Methods of Entry

IPHONE FORENSICS COURSE

The course is primarily lab based and exercises are based on iPhone and iPod touch.

- 1 - Forensic examination of the Apple iPhone, iPod Touch and iPad devices
- 2 - Recover stored and deleted data
- 3 - Acquire data and retrieve GPS location of actions made by the device owner
- 4 - Extract the maximum information using both XRY Logical and XRY Physical analysis





INTELL VIDEO/AUDIO CONCEALMENT COURSES

Our Specialist Video/Audio Concealment Training Courses are designed for Technical Surveillance departments who require their own personnel to be trained on concealment techniques to enable these specialist skills to be used in their own departments. The course starts with the basics of fitting microphones and preamplifiers through to concealment techniques and installing covert devices into everyday objects, rooms and vehicles. Practical exercises also include audio/video transmission, digital audio/video recorders, concealment of antennas and power supplies. As part of the course each student will receive a concealment tool kit as well as a full set of practical manuals. With these skills students will be able to prepare and install covert devices that are more suited to the environment in their own country.

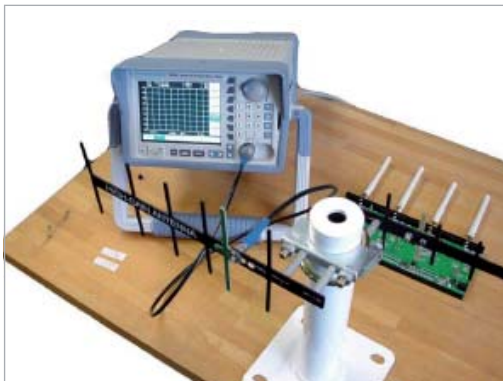


AUDIO CONCEALMENT SYLLABUS

- 1- Fitting covert microphones
- 2- Producing preamplifiers
- 3- Body-worn concealment techniques
- 4- Audio deployment in cars
- 5- Audio deployment in rooms
- 6- Producing concealment installations
- 7- Modifying high-tech digital transmitters
- 8- Practical surveillance exercises
- 9- Modifying GSM phones
- 10- Selecting the right power supplies

VIDEO CONCEALMENT SYLLABUS

- 1- Fitting covert cameras
- 2- Producing preamplifiers and microphones
- 3- Selecting the right power supplies
- 4- Body-worn video concealment techniques
- 5- Video deployment in cars and rooms
- 6- Producing video concealment installations
- 7- Integrating video transmitters
- 8- Practical surveillance exercises
- 9- Through-the-wall-video surveillance
- 10- Integrating video GSM Links





GAMMA REGIONAL OFFICES: MUNICH - DUBAI - SINGAPORE - MALAYSIA

GAMMA HEADQUARTERS

Fellows House, 46 Royce Close, West Portway Industrial Estate
Andover, Hampshire, SP10 3TS
United Kingdom

Tel. +44 1264 332 422

Fax. +44 1264 332 411

info@gammagroup.com

www.gammagroup.com